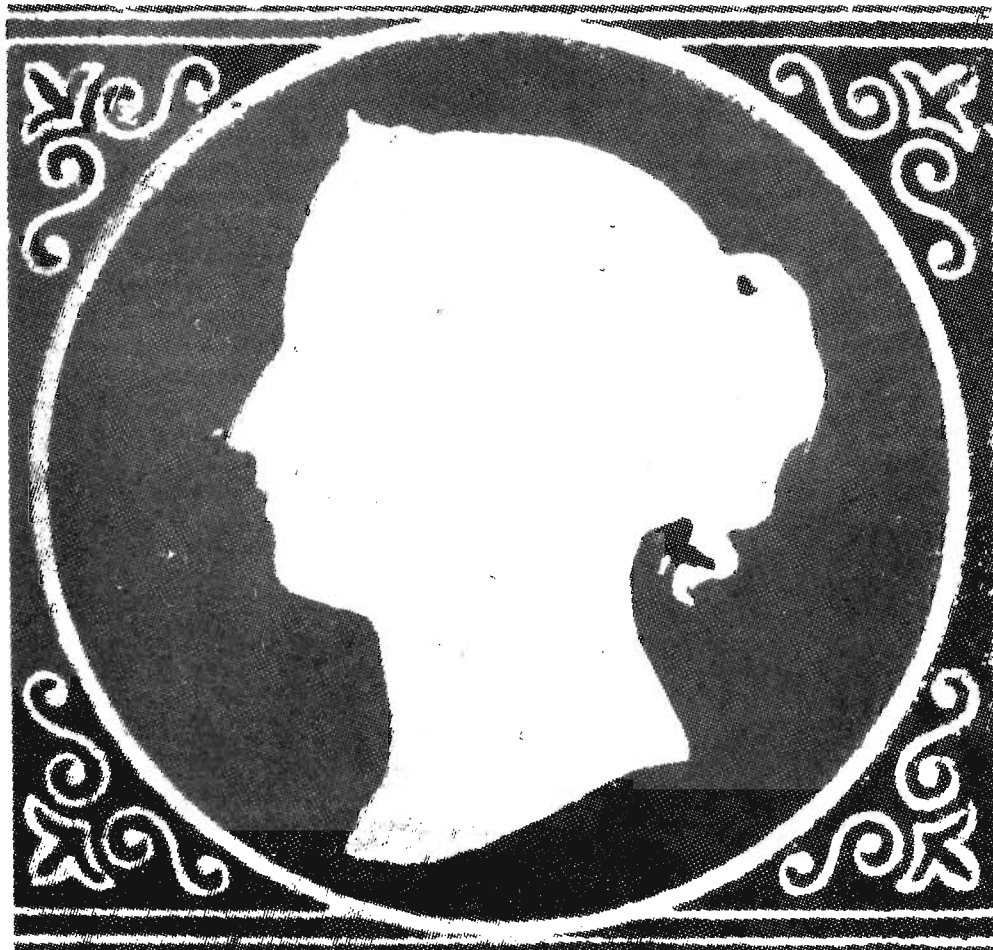


C A M E O



JOURNAL OF THE BRITISH WEST AFRICA STUDY CIRCLE

Editor:

J. J. Martin.

22, Constable Way, West Harnham,
Salisbury. Wilts. SP2 8LN.

Hon. Secretary:

P. O. Beale.

10, Cornfield Road,
Seaford. Sussex. BD25 1SW.

Specimen copy of the Journal free from the Secretary.

Published twice yearly in January and July.

Annual Subscription to the Circle £3.

CONTENTS

	<u>Page</u>
EDITORIAL	118
ASCENSION: VARIETIES ON THE 1924 ISSUE - L.V.T.MARTIN-PEACOCK	119
GAMBIA POSTAL STATIONERY	120
GAMBIA MACHINE CANCELLATION - P.O. BEALE	120
GOLD COAST: THE DE LA RUE ARCHIVES - P.O. BEALE	120
GOLD COAST - F.P.O. 108.	122
EARLY LAGOS COVERS - R.B. SANDERSON	123
NIGERIAN AIR MAILS - D.A. WOODS	123
POST OFFICE, FREETOWN	126
SIERRA LEONE POSTAL STATIONERY	127
19th CENTURY STAMPLESS COVERS FROM ST. HELENA - E. HIBBERT.	130
GEORGE V BADGE OF ST. HELENA ISSUE - J.J. MARTIN	132
B.W.A.S.C. POSTAL BID SALE NO. 7.	134
REALISATIONS AUCTION NO. 6.	137

EDITORIAL

In this issue of CAMEO, members will find an article on Ascension, a result of seeing an exhibit at STAMPEX earlier this year. I hope to have more to publish on Ascension in future CAMEO's.

The request for information on Gambia civil censorship markings has produced some response and, in due course, it is hoped to publish a list of markings and dates of use.

Articles on any aspect of West African philately are always welcome. It helps the editor if they are set out in the style used in CAMEO, preferably typed, (but this is not essential) and if possible with a copy.

ASCENSION: VARIETIES ON THE 1924 ISSUE

Concluded from Page 119

The sheet of 60 stamps, 12 x 5 perforated 14.

Mr. Martin-Peacock 'would be very interested if any of your members has a 1½^d with the Worn Plate etc. as the position is not yet known on the Grid.'

ASCENSION VARIETIES ON THE 1924 ISSUE.

L. V. T. MARTIN-PEACOCK

At STAMPEX 1977, the collection of Ascension formed by Mr. Martin-Peacock was awarded a Bronze Medal. In the display was a chart showing varieties to be found in the 1924 issue and your editor obtained permission to reproduce this.



		3	4	5	6				10		
13					18			20			24
25	26	27	28	29	30	31	32	33			
37		39	40	41	42				46		48
49	50	51	52								

- | | |
|---|--|
| <p>3. Slight break 2nd top line shading
1mm left.</p> <p>4. Retouch on scroll 1 1/2^d value only.</p> <p>5. Break in bottom frame of
vignette 1mm left.</p> <p>6. Line through c 1 1/2^d value only.</p> <p>10. Weakness in face of rock.</p> <p>13. Broken mast.</p> <p>18. White flaw behind stern
1mm from right.</p> <p>20. Break in bottom frame of
vignette 2 1/2mm from right.</p> <p>24. Bottom frame of vignette
broken twice.</p> <p>25. Break in 9th line of shading
between top of rock & formast.</p> <p>26. A later flaw across main mast.</p> <p>27. Dent in right frame of vignette.</p> <p>28. Mizzen mast broken above
mizzen royal yard.</p> <p>29. Scratch across 3 lines of shading
in front of rock.</p> <p>30. A later break in right frame
of vignette.</p> | <p>31. Break in top line of water
1mm from right.</p> <p>32. Diagonal break 11th line of
shading to the right of mizzen mast.</p> <p>33. Break in 12th line of shading
between main & mizzen mast.</p> <p>37. Shamrock flaw 8^d value only.</p> <p>39. Break right frame vignette
opposite water line.</p> <p>40. Break in shading below medallion.</p> <p>41. Top line white on stern tilts
upwards R.</p> <p>42. Torn flag.</p> <p>46. Break right frame vignette.</p> <p>48. Break left centre vignette frame.</p> <p>49. Cleft rock.</p> <p>50. Break 8th line shading to the
right of rock.</p> <p>51. White patch on hull, A later flaw.</p> <p>52. Break right frame of vignette
above water line.</p> |
|---|--|

GAMBIA POSTAL STATIONERY

Four items of George Sixth registered postal stationery have been seen in used condition. Previously the only recorded items were overprinted Specimen. They are sizes G and H posted in 1939 and 1940.

GAMBIA MACHINE CANCELLATION

P.O. Beale

A Machine canceller showing the usual circular date stamp and wavy lines was introduced into the Head Post Office on April 12 1977 for the cancellation of all light weight mail.

THE DE LA RUE ARCHIVES

P.O. Beale

A considerable part of these archives has been sold by auction and, no doubt, many members will have seen items offered for sale and correspondence about this in the press. When I made my original notes I had expected to be able to check them as I wrote descriptions for publication, but this is not now possible. The National Postal Museum has a microfilm of the Stamp Albums - in which most of the stamp material was placed - but this is of limited value for precise measurements cannot be taken, water-marks are not discernible, colours are not exact, perforations cannot be measured, and it is often not possible to determine whether parts are handpainted or printed. Microfilms were not made of material that was in the surviving Die Proof books nor of that material that was taken out of the Day books and Correspondence books for sale. We are however helped in these listings by the fact that Messrs. Robson Lowe have given many illustrations in their sales catalogues and generally there are careful descriptions to accompany them. The catalogues do not indicate which material came from these archives and each sale contains material from other sources. Despite the problems of completing these listings, the Editor and I think it worthwhile to continue with them particularly now that the often unique material has been so widely dispersed.

NINETEENTH CENTURY GOLD COAST.

Vol. XXVI Page 0000986.

1875. 1d blue and 6d orange overprinted cancelled 'less the 4d which was badly damaged'. $\frac{1}{2}$ d yellow and 2d green similarly overprinted. $\frac{1}{2}$ d yellow, 1d red and 2d grey overprinted Specimen. 2 $\frac{1}{2}$ d blue and orange dated Jan 91, 3d May 89, 2d Oct 01, $\frac{1}{2}$ d May 98, 1d, 2 $\frac{1}{2}$ d May 98, 6d, 1/- violet Oct 88, 2/- brown Oct 88, 5/- and 10/- dated Dec 99. Then all the Keyplate issue overprinted Specimen including both colours of the 20/-, the mauve and red dated Feb. 1. 94.

Page 2.

1875. A cut down die proof of the first stamp in black without value. 2 mint copies of each of the first issue dated 23.Ap.74. Then the 5 stamps of the 1876-79 issue mint plus a ½d used cancelled 554. The 9 issues of the 1884-91 issue mint. A 3d olive colour proof approved Ap 26 89 with hand-painted value, perforated with margin paper above and below the stamp, initialled BNS, plate No 1 at foot. 2 cut down die proofs in black mounted on card without values dated 9.Sep 89 and 25 June 92. Black die proofs of values for 1d, 4d, 6d all dated 12 May 75, 3d 8 May 89, 1/- and 2/- 11 Sep 88.

Page 3.

A cut down die proof in black as used for the 1½d postcard dated 23.7.79. A rejected essay for the 2½d stamp dated 6.De.90. This is a proof taken from the colonial keyplate series struck in blue with value handpainted in green, initialled BNS. Then a second proof being the approved essay in ultramarine with handpainted value in orange, boxed reference number at foot of stamp number 1, dated 20 Dec 90. Die proofs in black of the values for the 5/- 10/- and 20/- dated respectively Ap 13, Ap 16 and Ap 18. Then the first 2 of these stamps but the 20/- green and red has been removed from the archives. 'A requisition of Jan 2 94 called for a specimen of a £1 printed purple in doubly fugitive ink on a red paper. Submitted Jan 5, returned by Crown Agents on Jan 9th.' An imperforate plate proof of the stamp is shown together with the issued stamp.

Page 4.

July 31 1883 'colour changes to accord with the International Postal Convention'. ½d green, 1d red, 2d grey perforated proofs each without values expressed. 'The I.P.C. needed a ½d and 1d colour change and opportunity was taken to change the 2d. The Governor approved the colours on 7 April 84.' The previous stamps are shown for comparison.

Page 5.

Feb 18.89. 'Following a request from the Gold Coast on Feb 12 1889 for alternative Postage and Revenue stamps' The Keyplate type stamps used for the first GC issue are shown overprinted Revenue in red (17½mm) 5/- value in blue, 10/- value in red, 20/- value in red also, 'as the colony had asked for their name to be printed at the sides'. Also submitted were the universal Keyplate stamps (as in the 1889 issue) with handpainted values for 5/-, 10/- and 20/-. There is also a handdrawn and painted essay with the words Gold Coast Postage and Revenue in a circle around the Queen's head dated Feb 22.89. The value is in silver on a blue background, the stamp itself painted in purple and blue. This essay was rejected.

Page 6.

The mint stamps issued between 1889-1902 less the 20/- green and red.

Page 7.

Headed Appendix A. March 19th 1897. 'following a request from the Government for Postage and Revenue stamps from the Universal Keyplate' 16 6d Imperium proofs submitted for the values from $\frac{1}{2}$ d to £5. The £1 and £5 are on red paper, the others in purple and green with various colours for the value tablets. This page shows some approved colours.

Page 8.

Headed Appendix B. A further 16 6d Imperium proofs: same date. These are in purple and green with various tablets.

Page 9.

Headed Appendix. 32 Imperiums. 'These because the Crown Agents had requested specimens printed on white paper and on yellow paper in black ink like the Hong Kong 1 dollar' dated Feb 8th 1898. 'A £5 stamp, for which these colour combinations were printed, was not, however, issued'.

Page 10.

Feb 1st 99. Imperiums overprinted Judicial. 10 different colour combinations of a 6d value showing colours recommended for 1d, 3d, 6d, 1/-, 2/-, 2/6, 5/-, 10/-, £1 and £5 - a colour scheme having been requested on Jan 27.99. 'This scheme was rejected in favour of one submitted on Feb 6th.' A further 13 Imperiums follow, 5 on yellow paper, 8 grey-black on white paper, overprinted Judicial dated 2.2.99.

Page 11.

The Feb 6th 99 scheme of colours showing 20 Imperiums on white and yellow papers. These are divided into Appendix C and Appendix D: the ^{former} latter was preferred. 'The aim was to get colours different from the Postage and Revenue'. (Appendix D shows the actual issue of Judicial Revenue stamps).

GOLD COAST - F.P.O. 108

At the 1977 Spring meeting of the Circle in London, Mr. Cooper showed a cover with a reasonably clear strike of FIELD POST OFFICE 108.

Crouch and Hill in 'British Army Field Post Offices 1939-1950' record 108 as being used in the Gold Coast between 1941 and 1945 but no examples have been recorded. See CAMEO 3 and the article by Mr. Kennedy.

Mr. Cooper's example is on a stampless envelope and is dated 6 FE 45. In addition there is a violet shield type army censor cachet number 7128. This is the Forces Postal History type A6.

This cover is addressed to the U.K. In his collection, the editor has a stampless cover addressed to South Africa with F.P.O. 45 of the Gold Coast and with a similar censor cachet but numbered 7129. Further evidence is necessary but it does seem likely that F.P.O. 108 was actually used in the Gold Coast.

EARLY LAGOS COVERS

R.B. Sanderson

I have recently had occasion to look at my early Lagos covers and came across a note that the earliest known Entire from the Colony was dated 6th January 1856.

I then looked up "West Africa" etc. auction catalogues and found that Western Auctions Ltd. at their Bristol sale on 21st July 1973 sold for £55 (lot 602) "LAGOS. Entire to Italy, 21st July 1855, Plymouth Packet Letter c.d.s. 27 Au 1855 on reverse and boxed two-line "COLONIES/& ART. 13" in red on the front.

My earliest Entire of a similar 'nature' in my collection is one from Lagos to Genoa of September 1856 bearing a "Plymouth/OC 8/1856/B/Packet Letter" c.d.s., a red boxed two-line "COLONIES/ART. 18", French T.P.O. c.d.s. of 9.10.56 and arrival boxed date-stamp of Genoa 13.10.56. The manuscript rate on the front was $1s/3d = 1\frac{1}{2}$ ozs at 5d per $\frac{1}{2}$ oz.

The boxed "COLONIES/ART. 13" and "ART 18" marks on these covers are, of course, very scarce but what I really want to solve is the date of the earliest known Entire/Letter from Lagos. Have any of our members got the July 1855 and/or January 1856 Entires in their collections?

NIGERIAN AIR MAILS

D.A. Woods.

Reference articles in Cameo Nos. 3 and 4 p. 49-51 and 77-8 by W. Osborne.

It may interest members to know that Special envelopes were produced for the first London - Nigeria and Nigeria - London flights. They were "The Imperial Airways Airmail Stationery". The front of the cover has the normal blue "BY AIR MAIL/PAR AVION" cachet in the top left hand corner and imprinted beneath is :

First direct Air Mail

London to Nigeria

via Khartoum

or

First direct Air Mail

Nigeria to London

via Khartoum

I also have type-written flight schedules for the outward and return flights. Although type-written they are headed confidential and I give them herewith, in good faith. (Additions of my own marked*)

London - Nigeria

First Mail Carrying Flight

FLIGHT A.S. 317

	London	dep 1235 Mon 10 Feb 1936	
	Paris	arr 1525 " " " "	
		dep Tue 11 Feb 1936 *	
G-ABFC	Brindisi	arr " " " "	*
		dep 0945 Wed 12 Feb 1936	(1 day late)
	Athens	arr 1435 " " " "	
		dep 0520 Thu 13 Feb 1936	(2 days late)
	Alexandria	arr 1125 " " " "	
	(Alexandria to Cairo by rail)		
G-AAUE	Cairo	dep 0300 Fri 14 Feb 1936	(2 days late)
	Khartoum	arr 1610 " " " "	

FLIGHT W.A.S. 2.

G-ACWC	Khartoum	dep 0458 Sat 15 Feb 1936	(2 days late)
	El Obeid	arr 0650 " " " "	
		dep 0730 " " " "	
	El Fasher	arr 1018 " " " "	
		dep 1125 " " " "	
	Geneina	arr 1308 " " " "	
		dep 0435 Sun 16 Feb 1936	(2 days late)
	Abesher	arr 0540 " " " "	
		dep 0615 " " " "	
	Ati	arr 0735 " " " "	
		dep 0743 " " " "	
	Fort Lamy	arr 0939 " " " "	
		dep 1030 " " " "	

Maidugari	arr 1130 Sun 16 Feb 1936
	dep 1200 " " " "
Kano	arr 1400 " " " "

Nigeria - London

First Mail Carrying Flight

FLIGHT W.A.N.2.

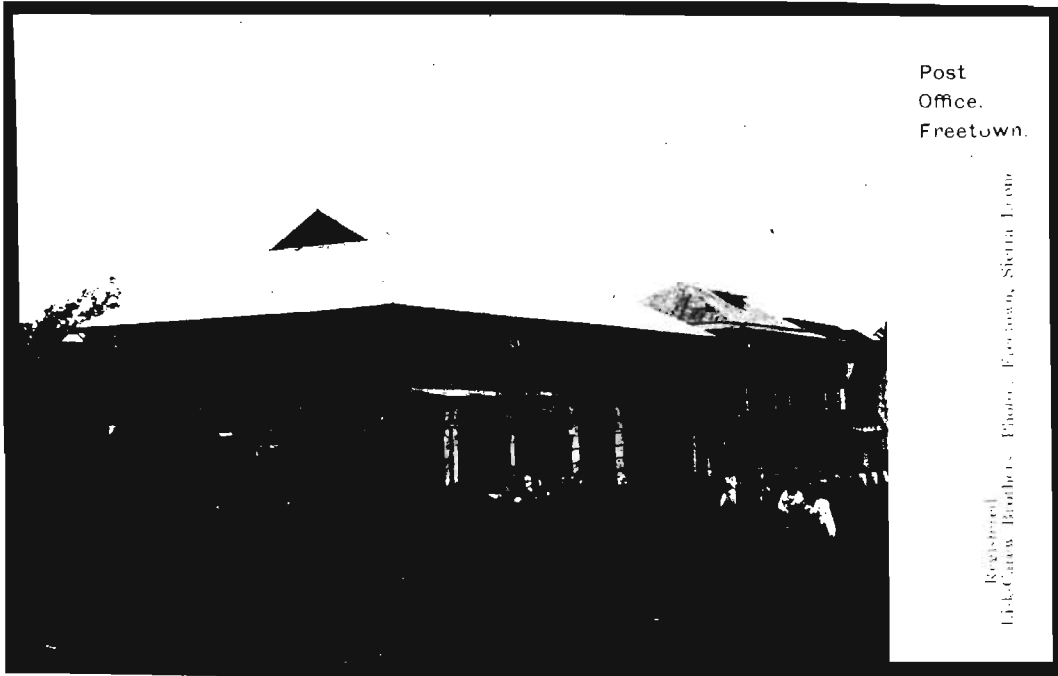
G-ACWC	Kano	dep 0520 Mon 17 Feb 1936	(2 days late)
	Maidugari	arr 0725 " " " "	
		dep 0830 " " " "	
	Fort Lamy	arr 0938 " " " "	
		dep 1010 " " " "	
	Abesher	arr 1323 " " " "	
		dep 1423 " " " "	
	Geneina	arr 1522 " " " "	
		dep 0450 Tue 18 Feb 1936	(2 days late)
	El Fasher	arr 0630 " " " "	
		dep 0708 " " " "	
	El Obeid	arr 0946 " " " "	
		dep 1025 " " " "	
	Khartoum	arr 1224 " " " "	

FLIGHT A.N. 317

G-AAUC	Khartoum	dep 0055 Fri 21 Feb 1936	(2 days late)
	Alexandria	arr 1545 " " " "	
G-ABFC		dep 0835 Sat 22 Feb 1936	(2 days late)
	Athens	arr 1745 " " " "	
		dep 0700 Sun 23 Feb 1936	(2 days late)
	Brindisi	arr " " " "	
		dep Mon 24 Feb 1936*	(2 days late)
	Paris	arr " " " " *	
G-AAXD		dep 0930 Tue 25 Feb 1936	(2 days late)
	London	arr 1146 " " " "	

On flights W.A.S.2. and W.A.N.2. the plane was piloted by Capt. O.P. Jones.

POST OFFICE, FREETOWN



This postcard is probably Edwardian. Unfortunately, it has not been postally used.

In CAMEO 7, I hope to reproduce a postcard of the Lagos Post Office, and hope that these will be of interest to members. If members have postcards of other West African Post Offices, I would be pleased to hear from them.

J. J. MARTIN.

SIERRA LEONE POSTAL STATIONERY

There are certain amendments and additions to be made to the lists published in CAMEO'S 1, 2, 3 and 5.

POSTCARDS

Add to first issue: 1881/83 Head of Queen Victoria without border.

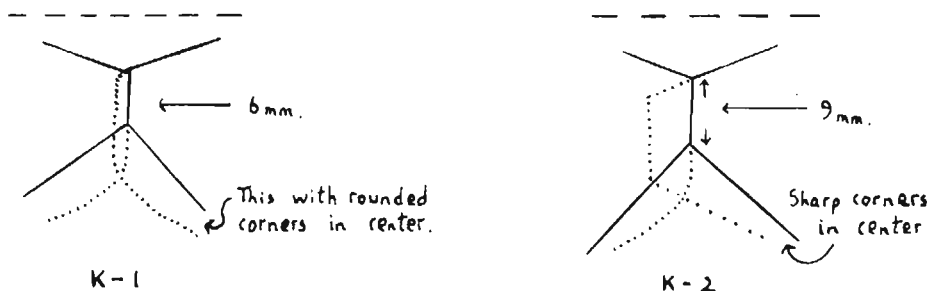
<u>H. & G.</u>	<u>R. L.</u>		<u>SPECIMEN</u>
4	CP4	3 Halfpence + 3 Halfpence grey on buff. 139 x 89 mm. Perforated 7.	?

H & G 13 exists SPECIMEN. H & G 19 - date of issue should be changed from 1940 to 1941.

Reference is made in Higgins and Gage's listing of perforation differences in the postcards. It should be noted that the system adopted is that initiated by Dr. Asher i.e. the perforation count is made in a space of 30 mm; not 20 mm as is customary with stamps.

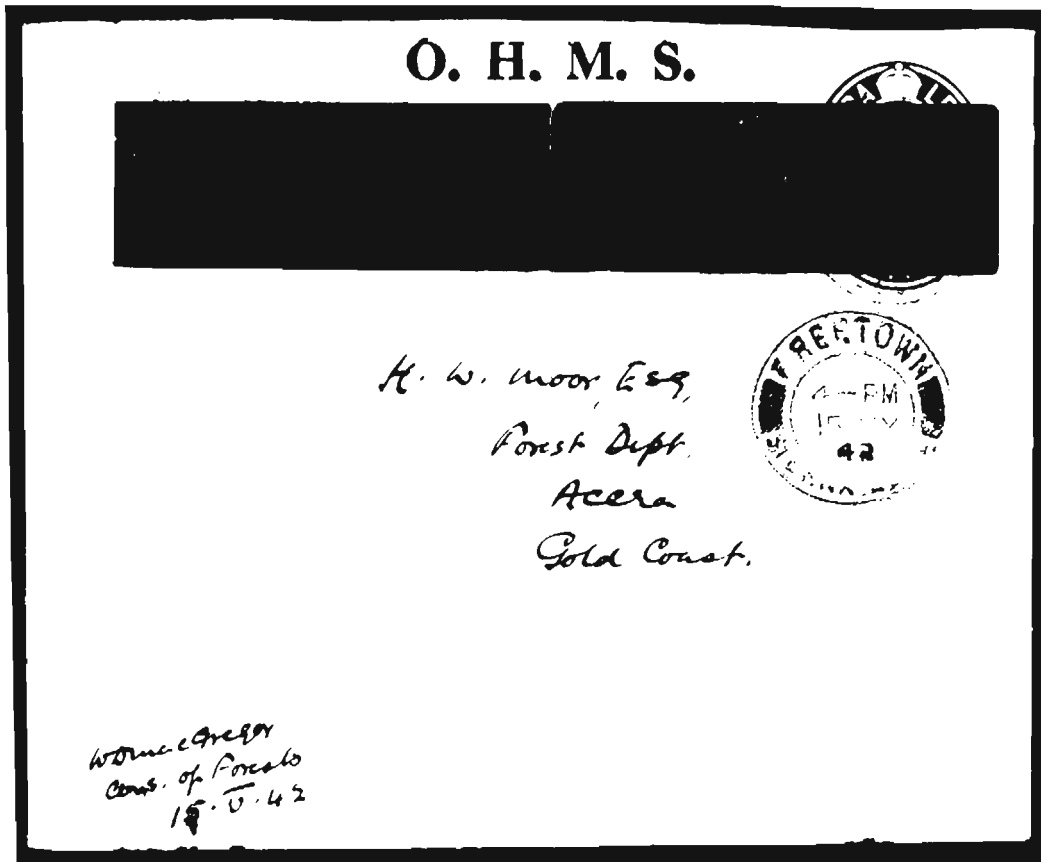
ENVELOPES

Mr. Menuz reports the use of two different knives to cut envelopes of Edward VII and George V.



K - 1 exists on H & G 2 and 3a and K - 2 on H & G 3a and 5a.

Mr. McCaig has reported an unusual envelope. This is H & G 8 (George VI TWO PENCE) overprinted 'O.H.M.S.' and with a broad black band 116 x 22 mm covering most of the embossed stamp.



The envelope was postmarked FREETOWN 15 MY 42 and addressed to Accra. This appears to be an emergency war-time overprint.

Robson Lowe Ltd., held a British West Africa sale in London on November 24th 1976 when certain postal stationery items from the De La Rue archives were offered.

POSTCARDS

- Lot
417 1912 1d photographic essays, three different styles marked "D1", "D2" and "D3", each affixed to card (89 x 114 mm), the first one marked "Approved W.H.M. 22.11.11."
- 418 1937 1½d red, two complete cards, one with two pinholes marked "Appd NS 31/12" and in lower right initials "30/12 D 289", the other with rubberstamp oblong "FILE", initialled and "30/12 D 288" at lower right.

- 419 1941 2d red, two complete cards, one unmarked, the other with rubberstamped oblong "FILE" and manuscript "Approved RWC 27/2/41" pinholes, also piece of interleaving with "FILE" handstamp.

ENVELOPES

- 420 1937 1d proof in orange on ordinary buff paper (55 x 56 mm) marked "V 499", initials, and "31/8/37".
- 421 1937 2d proof in mauve on similar paper (51 x 54 mm), similarly marked but "V 508".

REGISTERED ENVELOPES

- 422 1894 2d, proof in vermilion on laid paper (30 x 30 mm) one corner thinned.
- 423 1923 4d, in orange, proof in orange with handpainted "FOUR" affixed to card (114 x 117 mm) dated "12th July 1923" and marked "approved colour to be brown Herbert F. Smith 16.7.23".
- 424 1937 3d, in brown, proof on ordinary buff paper (52 x 47 mm).
- 425 1937 3d, in blue, proof on thick laid paper (62 x 64 mm). dated on reverse in red ink "21.8.37".

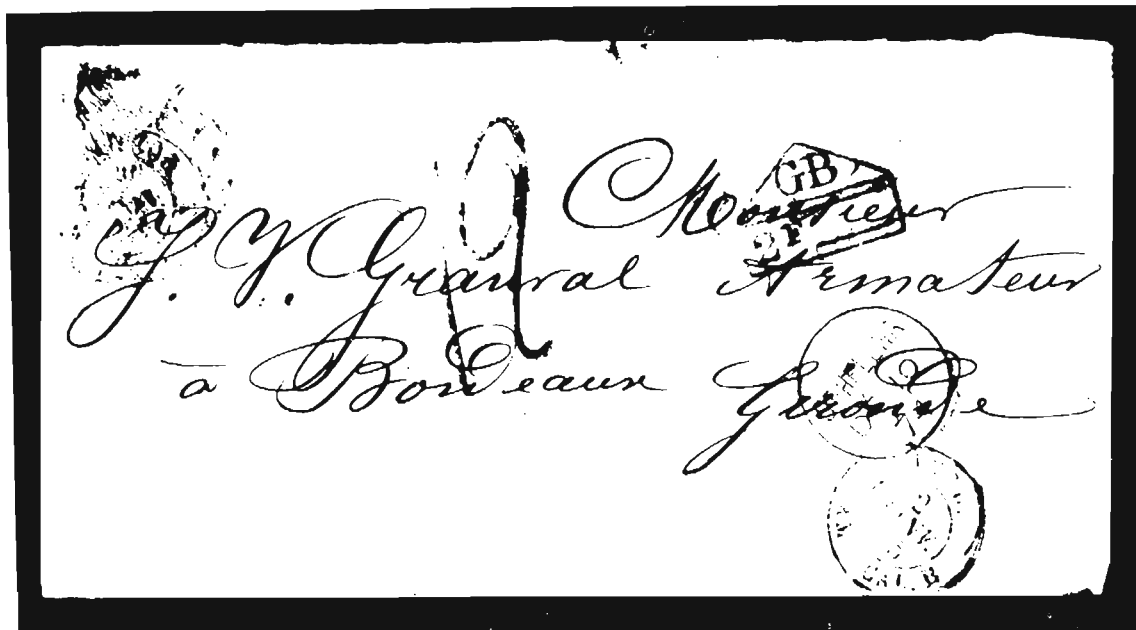
WRAPPER

- 426 1938 $\frac{1}{2}$ d green on ordinary buff paper (63 x 75 mm) marked "Appd", initials "22/6/38 C 804", diagonal and paper clip creases do not affect design.

19th CENTURY STAMPLESS COVERS FROM ST. HELENA

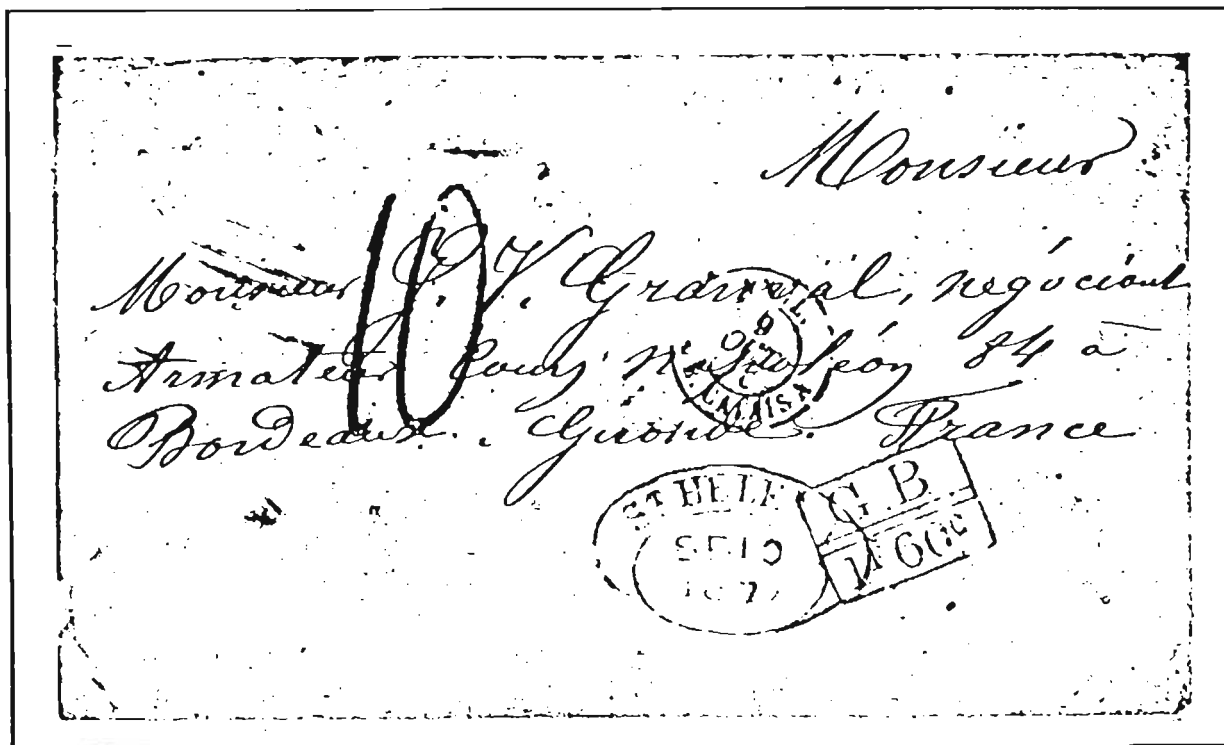
E. HIBBERT

Your Editor recently acquired an 1874 stampless cover from St. Helena (illustrated below) and sent this to Mr. Hibbert for comment.



Mr. Hibbert replied: I enclose a photostat of my 1870 from the commercial agents, Solomon, Moss, Gideon & Co. of St. Helena to the same addressee. This has an oval date stamp (10 SEP 1870) in black, the latest known date for the oval stamp, as the c.d.s. with straight-line "ST. Helena" was introduced in 1870. Covers of the 1870's are scarce; the only other one I have is 1879 with 1/- deep green.

1870



I don't know why these covers to France are not stamped. Pre-payment of postage was made compulsory from 1st December 1858, and a notice of Oct. 1863 stated that "all pre-paid letters must be stamped before being posted" Possible explanations are -

1. The island had run out of stamps. We know this happened in the latter part of 1858, and it is just possible that the island ran out again between the fifth consignment invoiced on 7 July 1868 and the sixth invoiced on 31 March 1871. The seventh consignment was on 31 July 1873, so it hardly seems likely that the island was again without stamps in 1874. I have seen stamped covers of 1873. I have two unstamped covers of 1860, but these are dated before the 1863 notice referred to above.

2. The letters were deliberately sent unstamped, so that the addressee would pay the postage. The postage to France in 1870 and 1874 was 8d. by Mail Packet, and normally letters were charged double rate if unstamped. The 10 on my cover is in black, indicating postage unpaid, but there is a London c.d.s. of 8 October 1870 in red (indicating postage paid) on the reverse, so who paid the postage?

The G.B./1 Fr. 60c. mark is Alcock and Holland No. 1681 (see their "British Postmarks", Fig. 676p. 182), and I believe indicates the amount due to Great Britain, but I am not sure how much 1 Fr. 60c. is. Your cover has a different and later type of this mark.

THE KING GEORGE V BADGE OF ST. HELENA ISSUE.

J. J. MARTIN

Looking through a dealer's stock of St. Helena, the writer spotted a 2d value of the 1922-36 set with the name 'C.W. ANTHONY' printed in the left margin outside the border. The photograph, enlarged, shows this clearly. The 1/- value is for comparative purposes.



Closer examination shows that the rock face nearer the ship shows signs of disintegration and part of the ship's rigging is also missing. The rock flaw is not the well-known 'Cleft Rock' variety.

This has been referred to Mr. Hibbert but neither he nor the writer can offer an explanation. We would be pleased if members of the Circle would examine their copies of this stamp to see if others exist.

B.W.A.S.C. POSTAL BID SALE NO. 7.

Lot No.	1.	GAMBIA.	Cover dated 14.7.37 from England to Cathurst (backstamped 16.7.37) via Deutsche Luftpost (cachet in red).	R £20.00
	2.	"	Postmarks, KG. V & VI, Bansang, Mansa Konko (3), Basse (9), Georgetown (2), Kaur, McCarthy Island (5), TPO (5), TPO No. 2 (9)	-
	3.		S.G. 113 / 116 Mint with reversed WMKS. scarce.	R £35.00
	4.	GOLD COAST.	S.G.22 'SPECIMEN' fine.	R £4.00
	5.	"	" S.G.23 " fine.	R £4.00
	6.	"	" S.G.24 " stained & no gum	R £2.00
	7.	"	" S.G.25 " fine, but heavy hunge	R £5.00
	8.	"	" S.G.79 Mounted Mint	E 25p
	9.	"	" S.G.79a " "	E 25p
	10.	"	" S.G.80 " "	E £1.25
	11.	"	" S.G.81 " " natural paper crease	E £1.00
	12.	"	" S.G.81a " "	E £5.00
	13.	"	" S.G.82b " "	E £3.50
	14.	"	" S.G.83 " "	E £4.00
	15.	"	" S.G.83a " "	E £3.50
	16.	"	" A.G.86-98 " " (no S.G.89)	E £5.00
	17.	"	Postal Stat.Envelopes, QV 1d. H&G 1a mint	R £2.00
	18.	"	" " " " " KG V 1d. H&G 3 Specimen.	R £3.00

19	GOLD COAST	Postal Stat. Envelopes, KGV 1d. H&G 4 mint (foxed)	-
20	" " " " "	KGV 1d. H&G 5 mint, rare	R £5.00
21	" " " " "	KGV 1½d. H&G 6 mint, rare	R £5.00
22	" "	U.S. APO 606 (ACCRA) on cover 30.12.43	R £3.00
23	" "	U.S. ARMY POSTAL SERVICE cancel, written from APO 606, 25.4.43.	R £2.00
24	" "	ditto. dated 19.3.43.	R £2.00
25	" "	Postage dues D5 - D8 mounted mint	E £0.40p
26	GHANA	60 covers inc, FDC 1957-1970	E £1.00
27	"	14 covers, 1 local card. London & Mt. Pleasant Customs also green label, 'Insufficiently Paid' (2), P.Due marks 5 diff. aerogrammes, 1 Christmas.	R £1.00
28	LAGOS.	PMKS. on QV - KEVII. Paquebot (2), German Seepost, Abeokuta, Lagos, Plymouth duplex (on pr.) & Warri.	R £1.00
29	"	S.G. 19, 20 & 26 all thined.	E 50p
30	NIGER COAST.	S.G. 74a unused.	E £4.00
31	NIGERIA.	S.G. 49 sheet of 120.	E 75p
32	"	S.G. 50b sheet of 120.	E £1.00
33	"	S.G. 53a sheet of 120.	E £4.50
34	"	S.G. 54a sheet of 120.	E £5.00
35	"	S.G. 50ba sheet of 120.	E £1.00
36	"	S.G. 57a sheet of 120.	E £8.50

37	NIGERIA	KGVI Air Letter Form 6d. 1948, unused.	E	40p
38	"	QE11 Reg. Envelope H&G 7a used 16.9.57.	E	£1.00
39	"	KGV 1½d. Envelope mint.		-
40	NORTHERN NIGERIA.	S.G.30 'Long Beard Variety' mint & 'photo'.	E	50p
41	OIL RIVERS PROTECTORATE	S.G.5. 'SPECIMEN' fair, but scarce.	E	£4.00
42	SOUTHERN NIGERIA	QV 1d. Envelope mint.		-
43	NIGERIA	S.G. 59c mint.		-
44	"	S.G. 69 & 70 paste up pairs (for coils)		-
45	"	S.G. 72 100 used copies. (3 lots available)		-
46	"	S.G. 101 used.		-
47	"	1st Flight cover, New York - Lagos. Blue cachet		-
48	"	" " " " " " " Purple cachet		-
49	"	" " " " Boston - Lagos, Blue cachet		-
50	"	" " " " " " purple cachet		-
51	"	" " post card " " " "		-
52	"	F.D.C. S.G. 116-119. unaddressed		-
53	"	F.D.C. S.G. 131 & 132. "		-
54	"	Cover from Kano Space Tracking Station. Launch of Gemini 8.		-
55		do. Gemini 11.		-
56	Selection of 57	QV/KGV B.W.A. items. 38 with pmks.		
		P.Stat. cut outs etc., etc.,	R	£1.50

PRICES REALISED IN AUCTION No. 6.

Lot No. 2.	£1.00	Lot No. 26	£1.50	Lot No. 39	£3.15
4.	8.50	26a	1.50	40	1.50
5.	2.50	27	3.00	41	5.50
6.	5.00	28	3.00	42	50
7.	5.00	29	2.50	43	50
8.	50	30	75p	44	1.50
9.	40	31	1.00	45	8.00
10.	50	34	1.25	46	3.25
12.	3.00	35	1.50	47	2.50
14.	6.00	36	50	49	2.75
15.	4.00	37	25	50	2.25
16.	2.00	38	50	51	2.50
52	1.50	53	2.25	57	1.20
				58	70