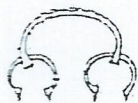
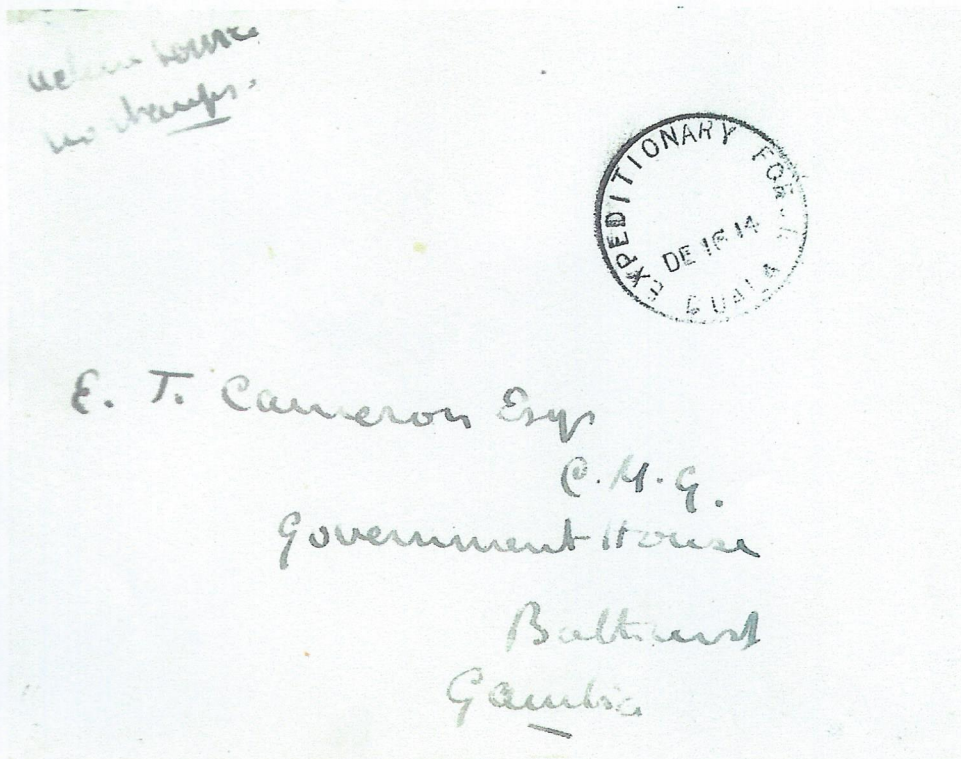
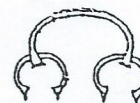


**THE
POSTAL ARRANGEMENTS
OF THE ANGLO-FRENCH
CAMEROONS
EXPEDITIONARY FORCE
1914-1916**



by
R. J. MADDOCKS



~ GERMAN COLONIES ON THE WEST COAST OF AFRICA ~
 ~ AUG 1914 ~



GERMAN COLONIES

1914 (Aug) Hand drawn fragile card with many faults depicting Native soldier with British soldier hoisting Union Jack & map of Africa highlighting Togo, German SWA, Cameroons being the German Colonies on the West Coast of Africa.

DRAWN BY A MEMBER OF THE ROYAL ENGINEERS, C.E.F.

~~NB~~ FRAGILE

18

18.9.14



Miss E. Ackland Allen.

St. Hilary.

Cowbridge

Glamorgan.

P. Wales.

17-20 SEP. 1914
ON BOARD
RMS "APPAM"
ON WAY OUT
TO CAMEROONS,
STOP AT LAGOS
AND NOT YET
ON ACTIVE
SERVICE. HENCE
NOT ENTITLED
TO FREE FRANK
MAIL CONCESSION

LAGOS 18.9.14

TWO LETTERS FROM CAPT. F. GILES, CHIEF ENGINEER AND
DIRECTOR OF SIGNALS CAMEROONS EXPEDITIONARY FORCE

On Active Service - No stamps available.

234

JL

Miss E. Ackland Allen

St. Hilary.

Cowbridge.

Glamorgan

England.



LAGOS 30.9.14.
C.E.F. INVADERS
CAMEROONS AND
CAPTURED
DUALA 27.9.14.
NOW ON ACTIVE
SERVICE AND THUS
ENTITLED FREE
FRANK MAILING.
CAPT. GILES WAS
VISITING LAGOS
FOR LOGISTICAL
SUPPORT SUPPLIES
BY NIGERIA
BOTH CIVIL AND
MILITARY
(GENERAL
ROUTINE ORDER
NO. 16 3.10.14
REFERS)

CACHET
IN VIOLET
LAGOS
SOUTHERN
PROVINCES
POSTS AND
TELEGRAPHS

COPY

Duala

Cameroon.

W. Africa

3.10.14

(PO FIRST DAY)

My dear Peter.

Here we are arrived safely at the first stopping stage on our journey. The Germans did not like our naval guns shelling the town, so hurriedly decamped, surrendering Duala unconditionally. And so, I find myself in a comfortable house with water laid on & all sorts of luxuries instead of sleeping in the open as I had anticipated. However I foresee that there will be some of that later on.

Meanwhile I send you some German stamps I found here. They should be valuable later on for you may be assured that no more will be issued!

Please thank your father for his letter of 31. 8. 14 which reached me a week ago & tell him I am sorry ~~that~~ ^{he is} too far away for me to get him a job out here although there are plenty of them going begging.

I hope you are getting on alright at school & are in the football team by this time. You must not let Oliver beat you in games records.

Write to me when you get this & be sure to look after the stamps. They are certain to be valuable later on.

My address is Staff Officer, W.A.F.F., c/o Colonial Office, London.

NB

3.10.14
FIRST DAY OF
OPERATION OF
C.E.F POST OFFICE
BY BRITISH
CONTINGENT

from your old friend

Frankie Giles

Remembers me to your mother

On active service.

No stamps available.

ONDON.F.S.
DATE
J.P.

LETTER
ENCLOSED.
WRITTEN
3-10-14

Peter Powlett Esq.

~~Colborne~~

~~Abercromby~~

13 Palace Mansions

Wendington

London

Wormouthshire

England.



FIRST DAY OF
OPERATIONS
OF C.E.F.
FIELD POST
OFFICE AT
DUALA,
SENT BY THEM
CAPT. F. GILES
CHIEF ENGINEER
AND
DIRECTOR OF
SIGNALS WHICH
INCLUDED POSTS
AND TELEGRAPHS.

FIRST USE OF CAPTURED GERMAN POSTAL
DATE STAMP (FRIEDMANN N°19)
WITHOUT INDEX LETTER AFTER KAMERUN

ONLY ONE
RECORDED -
THIS VERY
RARE ± £600



THESE KAMERUN STAMPS
ACCOMPANY THE COVER AND
ENCLOSED LETTER DATED
DUALA 3.10.14 TO ABERGAVENNY.
8x5pf., 2x10pf + 1/2 GEO. GB.

STAMPS
ENCLOSED
WITH ABOVE
LETTER.

On active service no stamps available. J.K.

Mrs Radcliff
Kilworth,
Kells,
Co Meath,
Ireland.



DOUALA
(KAMERUN) 2

56
10
9

On Active Service
no Stamps Available.

J. Ross
no.

S. Ch. Hanson Esq.
Ag. E. E.
Public Works
Calabar.



DOUALA
(KAMERUN) 2

15 10/14

On Active Service.
No Stamps Available.

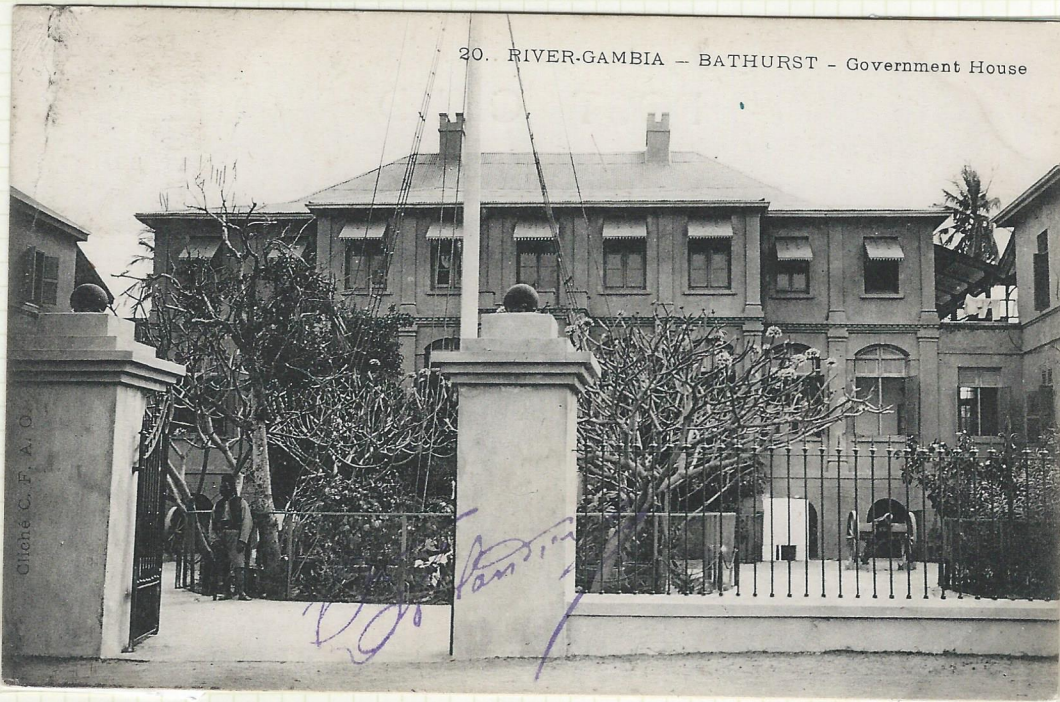
W.H.Whitehead, Esqre.,

P.O.Box 197,

LAGOS.



S. J. C.
A.C.O.O.



action here
no stamps



E. T. Cameron Esq
C.M.G.
Government House
Bathurst
Gambia

16. 12. 14
Gambia

CAMEROONS
EXPEDITIONARY
FORCE

POSTAL DATE
STAMP
IN USE FOR
VERY SHORT
PERIOD IN THIRD
WEEK DECEMBER
1914 ONLY.

THIS IS SCARCEST
RECORDED ARMY
POSTAL DATE
STAMP OF WWI.

(CAT \$1000 EACH)

DE 16.14

DE 19.14

action here
no stamps
C.D. 19. XII. 14
J.M.O.

John Lunnell
Esq.

Laigallieu.

Milugavie.

Great Britain.

Dumbartonshire



Bathurst
"Kamerun"
Fulden

A PRICED CHECKLIST
of
BRITISH
ARMY & FIELD POST OFFICES
1914 - 1919

Edited by
Charles R Entwistle

Published
1997

©

Chavril Press

Bloomfield, Perth Road, Abernethy, Perth, Scotland, PH2 9LW

BAR TPO	1918 - 1919	Beersheba - Rafa, Palestine	300.00
CAT TPO	1916 - 1917	Cairo - Port Said, Egypt	100.00
DAL TPO	1918 - 1919	Palestine	250.00
JAP TPO	1918 - 1919	Palestine	250.00
KAL TPO	1917 - 1919	Kantara - Deir el Belah, E.E.F.	200.00
LAD TPO	1918 - 1919	Palestine	250.00
LAK TPO	1917 - 1919	Deir el Belah - Kantara, E.E.F.	200.00
LAP TPO	1917 - 1919	E.E.F.	250.00
PAJ TPO	1918 - 1919	E.E.F.	250.00
PAL TPO	1918 - 1919	E.E.F.	250.00
RAB TPO	1918	Rafa - Beersheba, Palestine	300.00
RAK TPO	1917	El Arish - Kantara, Egypt	300.00
SAT TPO	1916	Suez - Port Said, Egypt	300.00
TAC TPO	1916 - 1917	Port Said - Cairo, Egypt	100.00
TAS TPO	1916	Port Said - Suez, Egypt	300.00
UPPER EGYPT TPO 2	1919	Egypt	350.00
UPPER EGYPT TPO 3	1919	Egypt	350.00
Z AND W TPO	1915 - 1917	Alexandria - Dabaa, Egypt	60.00

MISCELLANEOUS MARKS

ARMY LETTER OFFICE/LONDON	1917 - 1919	Home Depot	25.00
ARMY LETTER OFFICE 1/LONDON	1918 - 1919	Home Depot	25.00
ARMY POSTS/MFF/SUDAN	1916	Sudan	800.00
ARMY RLO/LONDON	1918 - 1919	Returned Letter Office	30.00
BRITISH APO/CONSTANTINOPLE	1919	Turkey	12.00
BRITISH MILITARY MISSION/ POST OFFICE	1919	Viadivostock, Russia	200.00
BRITISH MISSION POST OFFICE/ VALDIVOSTOCK	1919	Russia	150.00
CEP/SPC 1	1917 - 1919	Portugese Army, Western Front	40.00
CEP/SPC 2	1917 - 1919	Portugese Army, Western Front	40.00
CEP/SPC 3	1917 - 1919	Portugese Army, Western Front	40.00
CEP/SPC 4	1917 - 1919	Portugese Army, Western Front	40.00
CEP/SPC 5	1917 - 1919	Portugese Army, Western Front	40.00
CEP/SPC 6	1917 - 1919	Portugese Army, Western Front	40.00
CEP/SPC 7	1917 - 1919	Portugese Army, Western Front	30.00
CEP/SPC 8	1917 - 1919	Portugese Army, Western Front	20.00
CEP/SPC 9	1917 - 1919	Portugese Army, Western Front	40.00
CEP/SPC 10	1917 - 1919	Portugese Army, Western Front	40.00
CEP/SPC 11	1917 - 1919	Portugese Army, Western Front	40.00
CEP/SPC 12	1917 - 1919	Portugese Army, Western Front	40.00
CEP/SPC 13	1917 - 1919	Portugese Army, Western Front	30.00
CEP/SPC 14	1917 - 1919	Portugese Army, Western Front	40.00
CEP/SPC 15	1917 - 1919	Portugese Army, Western Front	40.00
CEP/SPC 16	1917 - 1919	Portugese Army, Western Front	40.00
CEP/SPC 17	1917 - 1919	Portugese Army, Western Front	40.00
CEP/SPC 18	1917 - 1919	Portugese Army, Western Front	35.00
CEP/SPC 19	1917 - 1919	Portugese Army, Western Front	40.00
DALO/LONDON	1917 - 1918	Dominions Army Letter Office	35.00
EXPEDITIONARY FORCE/DUALA	1914	Cameroons, West Africa	1,000.00
OC POSTS/BMM 1	1919	British Military Mission, S. Russia	200.00
OC POSTS/BMM 2	1919	British Military Mission, S. Russia	200.00
POSTAL REGULATING DEPOT/+	1914	Western Front	30.00
RE POSTAL SECTION	1918 - 1919	Home Depot	30.00
RE POSTAL SECTION/RLO	1917 - 1919	Returned Letter Office, Home Depot	30.00
ROYAL ENGINEERS POSTAL SECTION/ FS	1914 - 1915	Home Depot	35.00

44

JOINT SCARLEST WITH

ARMY TPO NO 2 NEF

1914-1919

NORTH RUSSIA

1,000.00

150

Let the Anglo French Expeditionary force to stamps available

Postkarte — Carte Postale available

Union postale universelle

Weltpostunion

Duala Kamerun 10888

26.12.14

KAMERUN

Mr Bull

79 Gosville Rd

Thorton Heath

Derry

26.12.14

My Sweet Lena, not in the least like you. Hope next year this awful war won't, Germany and all the people in Europe, have a...

SENDER
 H.N. BULL
 JONES' CEF
 2710 14 FROM
 NIGERIA POSTS
 (N) TELEGRAPHS
 LAGOS. AT CABLE
 OFFICE, DUALA
 VERY FINE

(SEE COVER 2345
 TO SAME ADDRESS.)
 FROM CABLE
 OFFICE FORMER
 GERMAN TELEGRAPH
 OFFICE

On active service, no stamps available. J.R.

DUALA

27.1.15

KAMERUN

Mr Radcliff

Wilmount,

Kells,

Ireland. Co Meath

No Stamps available
On Active Service,
L. B. ... Capt.



Messrs ~~XXXXXXXXXX~~

~~XXXXXXXXXX~~

~~XXXXXXXXXX~~

London, S. W.
England.

On active service - no stamps available.
Clifford, Capt.



to

F. W. Flight,

High St.,

England.

Winchester.

O.H.M.S.



Mr. Charles Davies,

Frodsham,

Cheshire,

England.

G.R. Hesjen
25/1/15

SIGNATURE OF ↑
G.R. HESJEN FOR
DIRECTOR POSTS & TELEGRAMS

FIRST PUTATIVE
REGISTRATION CONTRARY TO
GRO SAYING NO SERVICE OFFERED
JUALA KAMERUN & 16.2.15



Edward Challinor,
57 Hilton Street,
Manchester
ENGLAND.

← FRANKED WITH
STAMPS OF
SOUTHERN
NIGERIA
PRE ISSUE
CEF STAMPS.

Deutsch-Südamerikanische
Telegraphengesellschaft, A.-G.
Station Duala.

With the Anglo French Expeditionary
Force Duala Cameroon



Miss Ireda B. Bull
79 Gonville Rd
Thornon Heath
Dunree



Banque Française de l'Afrique Equatoriale
2, Rue Meyerbeer
Paris

NR
NOT
MARKED OR
ENTITLED
TO FREE
FRANK
CONCESSION
BUT
NO SURCHARGE
RAISED.

On active service
no stamps available
F. E. W.



AN
UNUSUAL
DESTINATION

D. H. Grist Esq

Agricultural Instructor

Kuala Pilah.

Fed. Malay States.

WOERMANN-LINIE A. G., Zweigniederlassung VICTORIA.

No stamps
available still



The
Assistant Manager
Bank of British West Africa
17 Leadenhall Street
London.

England

No stamps available - On active service.



Edward J. Woodes Esq.
10 Norfolk Street -
Strand.
London.
W.C.

E.J.W.

No stamps available.
Rivd R. 7
Rohde
Kuea



Mrs. J. Rohde
Ni Ni East
via Gerang at Dumboula
Victoria Australia

Active Service no stamps

Batianga "Cameroons,
between Kribi &
Camero. A big mission
Station before the
broke out.

21.4.15
A.W.H.

Mrs Alan Hughes,
3 Utrecht Mansions,
Harlem Road,
Brook Green,
London W.
England.



World War I; 1914 - 18. Cameroons Expeditionary Force. The postcard above is from Commander Allan W. Hughes, to his wife in England. The message being a description of the picture side of the postcard. The postmark a double ring, barred, date stamp of DUALA, code letter "A" and dated 21st. of April 1915. Note the manuscript entries of "ACTIVE SERVICE" and "NO - STAMPS" underlined. The photograph of Commander Allan W. Hughes is when he was a young Naval Officer.

Commander Allan W. Hughes, R.N.R., R.D., was the eldest surviving son of Arthur Hughes, Assistant Paymaster R.N., he was born on November 25th. 1877, and educated at Marlborough College. He entered the Merchant Service at the age of 17, and later on the Royal Naval Reserve. After some years he obtained an appointment in the Eastern Telegraph Company, and finally in the Marine Department of the Nigerian Civil Service. At the outbreak of the war, being then in West Africa, he served all through the campaign in the Cameroons as Acting Commander of the H.M.S.Y. "IVY". On the successful conclusion of the campaign he was called home for service with the Royal Navy when he commanded a Destroyer, serving for two years in the North Sea. During the latter part of the war he was transferred as Major in the Royal Engineers for service with the River Transport, Mesopotamia. After the war he went back to the Nigerian Civil Service until his retirement in 1928. At this time he has undertaken work for the Ship Wrecked Mariners Society. He died on the 16th. of August 1931.

BUEA WAS CAPTURED BY THE C.E.F. ON 16.11.14. BUT THE GERMAN GOVERNOR OF RAMERUN HAD MOVED TO DUALA ON 5.8.14 WHEN WAR WAS DECLARED. BEFORE DUALA WAS SUBSEQUENTLY SEIZED ON 27.8.14 THE GERMANS HAD USED THE GOVERNMENT SEAL FOR MAIL CENSORSHIP PURPOSES. IT IS NOT KNOWN WHERE/HOW THE SEAL CAME TO BE POSSESSED BY COMMANDER ALAN HUGHES OF H.M. YACHT "IVY". HE USED IT HOWEVER TO IMPRESS ON THESE FOUR VIEWCARDS DATED CAMP 3.4.15 AND AS MEMENTOS SENT THEM TO HIS WIFE IN ENGLAND. CAMP HAS BEEN OCCUPIED SINCE 24.10.14. THE "IVY" HEADED THE ALLIED NAVAL FLOTILLA PATROLLING OFF CAMP.

RAMERUN'S CAMPAIGN

POST CARD

Made in Germany

GERMAN GOVERNOR'S OFFICIAL SEAL, BUEA



SEAL OF OFFICER APPLIED BY COM. HUGHES AFTER CAPTURE OF THE GERMAN GOVERNOR'S HOUSE.

EX. COM. HUGHES R.N. SY. "IVY" COMMANDER TAKEN PART IN THE CAMPAIGN

Camps
 3.4.15, Com. Hughes
 ENTRY BY

[Handwritten text in German, mostly illegible due to cursive and overlapping marks]



[Handwritten address in German:]
H. Lotz
Spornstr. 18
Loburg
Thuringen
Deutschland

BUER 1-3-15
TO
GERMANY VIA
DUALA WHERE
KAMERUN GOVT.
HAD MOVED TO
BY 5-8-15 AFTER
WAR WAS
DECLARED IN
THE TERRITORY.
ACCUMULATED
MAIL SUBJECT
TO CENSORSHIP
WHICH WAS
EVIDENCED BY
USE OF THE
GOVERNMENT
SEAL AT DUALA.
AS A TEMPORARY
MEASURE.



A GOVERNMENT YACHT
IN THE KAMERUNS.

[Mr. E. W. Hughes, who is in the Government yacht Ivy, attached to the Cumberland, in the Kamerun River, writes to his wife how the boats got up the river to Duala and gives an example of German "respect" for the white flag of the enemy.]

I quite forgot to tell you that the person who was to have blown up the Ivy was a priest: I admire his courage, if not his convictions. It was a most desperate thing to attempt.

The idea was that one man drove the launch and steered at the same time, with the torpedo in the bows, and when it was near enough to be sure that it would hit the Ivy he was to jump overboard and try to save himself. The other launch was to pick him up if he did, which was most improbable, if he did his job properly and didn't jump too soon, like the man did who tried to sink the Dwarf.

Ask Father Valnet what he thinks of a priest attempting this desperate deed. I shall not go to confession any more!

Things are moving. I am in it. My reputation is not lost. For the last two days I have been surveying the river above the wrecks, covered by the guns of the Dwarf. This morning I brought H.M.S. Challenger through the wrecks and safely over the fate up to striking distance of Duala. This means everything to the expedition and mentioning in despatches for me, I hope. Child and P.J. are both here, living on board the Cumberland, but they are looking after the transports only, and I am still in command of the fighting part of the Marine.

As I write this to you we are only three miles from Duala. The Challenger, the Dwarf, the Remus (one of our craft armed), and the Ivy are here. We have General Dobell and Captain Fuller on board, and the general's A.D.C. has gone up to Duala in a launch flying a white flag with an ultimatum.

History is being made, darling, and I am as excited as the rest, which is saying something. We are giving them one hour to surrender the town or we will commence bombarding. And the troops will then be landed.

We have 9,000 troops and 7,000 carriers at the base, in fourteen transports, and the French cruiser Bruix. I expect I shall be piloting the ships up for the next day or two, whether the Germans fight or not. We are landing 2,000 troops to-night up one of the smaller rivers at the back of Duala, and seizing the railway bridge that they have to cross in getting away in that direction.

The German reply to our ultimatum was typical of the Germans. While the "parlementaire" was going on they sent a mine floating down on the tide, which being seen from the Challenger she opened fire on it with rifles and it blew up about a hundred yards from the ship. Nice, wasn't it?

Well, the German reply to our note was that they protested against us firing during the "parlementaire." Not a word about surrendering the town. So this morning at daylight the Challenger started pumping 100-pound shells into the town outside the range of their guns, while the Dwarf and the sweeping boats went on sweeping for mines farther up, so that the Challenger can get higher up. The 2,000 troops are on their way up the back river as I write. I wouldn't be at all surprised if they got a nasty knock, as beyond the bombardment we were doing nothing in

The Ivy is resting to-day. It is the first day's rest we have had since we arrived here, and we will probably end up by doing more than usual. Well, well, it's war. We got a mail bag yesterday, but, alas! there was nothing in it for me. It had evidently left before you got my wire telling you that I had joined the Ivy again. I hope the war will soon be over, and you will be able to come out to Duala.



THE TIMES 21.5.17

COMMANDER A. W. HUGHES

Commander Alan W. Hughes, R.N.R., R.D., died at his residence, St. Mary's, Hartfield, on Sunday, at the age of 53. He was the eldest surviving son of Arthur Hughes, Assistant Paymaster, R.N., was born on November 25, 1877, and educated at Marlborough College. He entered the Merchant Service at the age of 17, and later on the Royal Naval Reserve. After some years he obtained an appointment in the Eastern Telegraph Company, and finally in the Marine Department of the Nigerian Civil Service. At the outbreak of the War, being then in West Africa, he served all through the campaign in the Cameroons. On the successful conclusion of that campaign he was called home for service with the Royal Navy, when he commanded, first an armed yacht, and subsequently a destroyer, serving for two years in the North Sea. During the latter part of the War he was transferred as major in the Royal Engineers for service with the river transport in Mesopotamia, thus having the exceptional experience of serving both as a sailor and as a soldier. After the War he returned to the Nigerian Civil Service until his retirement some three years ago, at which time he was Principal Marine Officer at Lagos. After his retirement he undertook work for the Shipwrecked Mariners' Society, which he only relinquished shortly before his death. **DIED 16.3.1931.**

AVON RUIS ALBION LEAF 4317
STANLEY GIBSONS LTD. LONDON AND RINGWOOD
MADE AND PRINTED IN GREAT BRITAIN



*with
stamp
1/6*



The Secretary

Ac. N. Co. Ltd

105 Victoria St.

Westminster

London W.C.

England

On Active Service-----No Stamps Available.



The Manager,

The Bank of British West Africa Ltd,

17&18 Leadenhall St,

London.E.C.,

ENGLAND.

E. C. Braithwaite

On Active Service.
No Stamps Available.



Mrs. Cormody,
290 Sandycombe Road,
Kew,
near London,
E N G L A N D.

S.C.
A.O.O.

*On active service
Stamps not to be.*



*Madame M. Bousquet
18 Grande Rue
Chancy
In the S. France*

25

*General Headquarters, 25/5/15
Cameroon Expeditionary Force
Duala, W. Africa.*

Dear M^{rs} Bousquet;

*Very many thanks for your
card which was forwarded to me from home
since August 31st last I have been serving
as Officer de Renseignement to this force
am now attached to the French Cameroon
column, so when I visit you & your husband*

PRINTED IN GERMANIA



*after the war I hope to be able to speak a
little French. I was with the French column at
the taking of Esika on the 11th of this month. I
cannot only read, but we are now on the march. Please
remember me to Pierre. I will write a letter soon. I hope he is
quite well. My kindest regards. Yours sincerely
Gen. Collet*

Verein der Nord- und Mittelkamerun-Kaufleute
„Abteilung Kamerun“.

actus Servier.



Miss G. K. Vise
Slythe House
Holtbrach
Lincolnshire

KAMERUN
MAIL POSTED
AT FORCADOS,
NIGERIA, WHICH
ACCEPTED
CEF FREE
FRANKED
MAIL OFF
COASTAL
VESSELS
CALLING
FROM
CAMEROON
TO CATCH
MAIL SHIP
TO ENGLAND.

No stamp available



The Manager
Bank of British West Africa
Togo Lome

DUALA
(KAMERUN) b

18.6.15

From
C. A. Williams
127 Victoria Road

Post Office Service No Stamps payable.

Stuart J. Anderson Esq.

6. Cambridge Street.

Hyde Park.

England.

London. W - 24.6.15



The Amba Bay Trading Co., Limited, Victoria.

Stamps not available

James Wolfenden
Highfield Bank
574 Hall Street
Southport
Lancashire
England

28.6.15



On His Majesty's Service

Reg. No. *H 133 LBS*
15

The Controller,
Post Office Savings Bank,
West Kensington,
LONDON, W.

Post Office Savings Bank.
No. 1c.



IN JULY 1915
FOLLOWING THE
ISSUE OF THE CEF-
OVERPRINTED STAMPS,
CEF POST OFFICE
SWITCHED FROM
USING 'KAMERUN 2'
TO 'KAMERUN B'
DATE STAMP.

WAS IT TO EMPHASISE
THROUGH THE 'B'
THAT THE BRITISH
RAN THE POSTAL
FACILITY?

"2" SELDOM
SEEN USED
HEREAFTER.



On Active Service

No Stamps Us as Table.

*R.B. Clough
Lieut RB*

The Secretary

Army & Navy Co-op. Society

Victoria Street

*London SW
England*



NB
← THIS DATE
ALSO SEEN ON
PHILATELIC COVER
WITH GERMAN
DUALA KAMERUN
WITHOUT ANY
INDEX LETTER

On Active Service

No. 1000



*Messrs Charles Tackett & Co
76 + 78 Regent St
London W
England*

*Shunt
Dada*

CAMEROONS: 1915 Stampless and unaddressed cover bearing four impressions of each marking, first the German "DUALA/(KAMERUN)b" marking and second the British Skeleton "EXPEDITIONARY FORCE/DUALA", both dated the same day "23.8.15" and "23 AU 15" respectively.

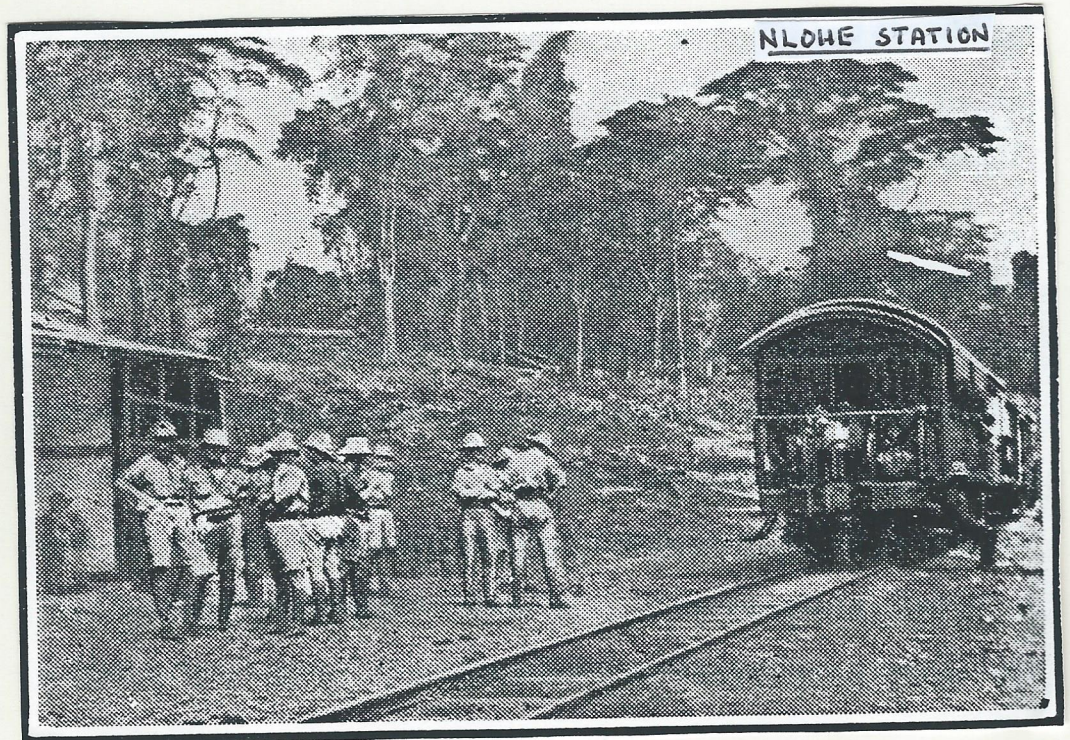


THIS COVER WAS LIKELY SELF ADDRESSED AND PRESTAMPED WITH BRITISH STAMPS FOR THE MAILING FROM DUALA OF THE REQUESTED BY-FAVOUR IMPRESSIONS OF DUALA POSTAL DATE STAMPS ON THE TWO COVERS BELOW. THESE SHOW SIGNS OF BEING FOLDED TO GO INTO THE FORMER. WHILE THE FORMER GERMAN DATESTAMP WITH INDEX LETTER 'B' WAS STILL IN POSTAL USE THE EXPEDITIONARY FORCE ONE WAS NOT. IT HAD BEEN SEEN USE ONLY FOR A FEW DAYS IN THE THIRD WEEK OF DECEMBER 1914. THEN THE DATE HAD BEEN SET MONTH-DAY-YEAR. - VERY RARE AND NON-POSTAL USAGE. (SEE DEC. 16 AND 19 1914 FOR ALSO VERY RARE POSTAL USAGE.)



← THIS SAW POSTAL USE AT C.E.F. POST OFFICE UNTILL BRITISH WITHDREW AT END OF MARCH 1916

← FATE OF THIS UNIQUE DATE STAMP UNKNOWN



**Kamerun-Eisenbahn-Gesellschaft (Industrie-Betriebe).
Bonaberi (Kamerun).**

ON ACTIVE SERVICE

J. L. Pratt Esq.

H.B.M. Consul

at

Isinanfu

Shantung

N. China



UNUSUAL
DESTINATION

From
Kamerun
Nov 1915

Proximus
Capt. W. G. G. R.



Captain H. R. Greene

Gold Coast Regt

NLOHE

RARE CASE
INTER-KAMERUN
MAIL FROM
DUALA TO
NLOHE STATION
ON NORTHERN
LINE

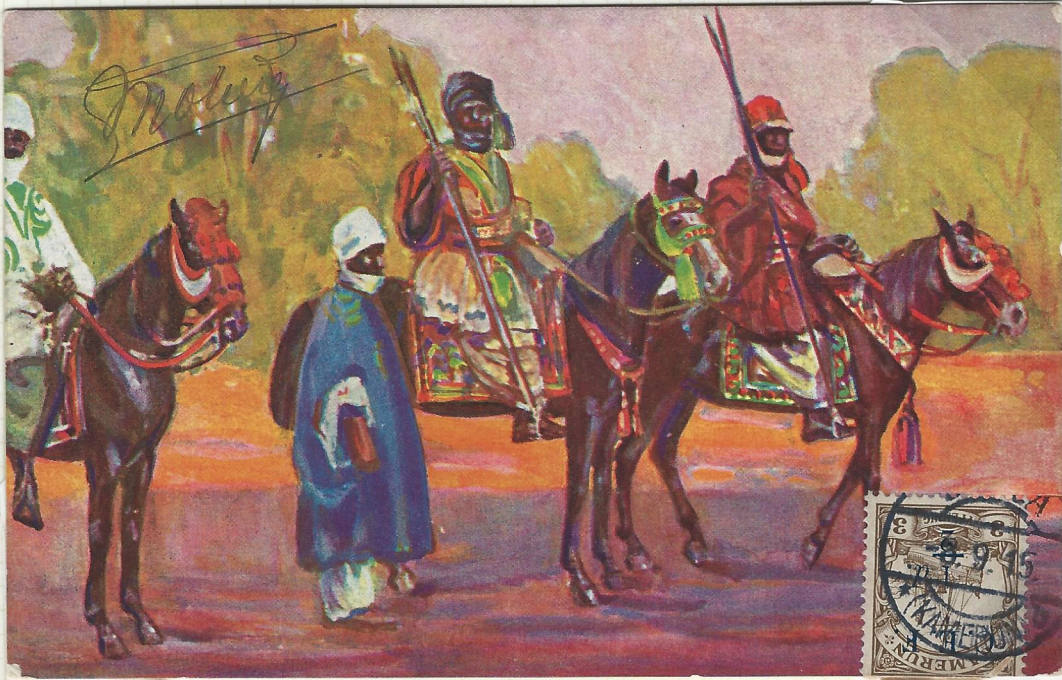
To

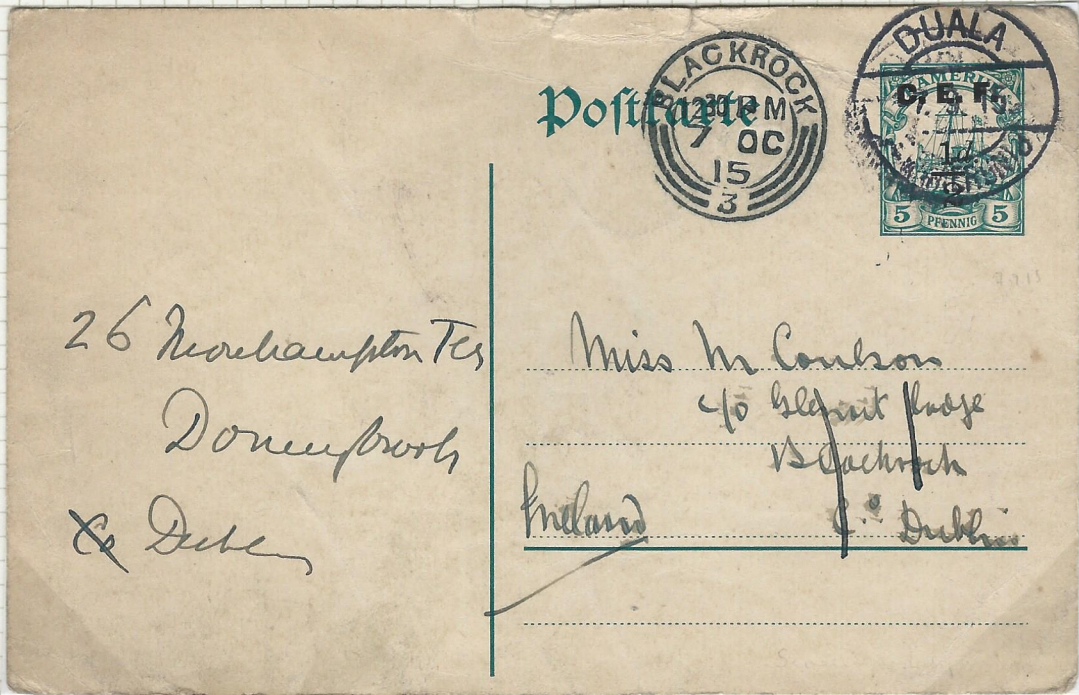


general Merchant

Factor And warehouseman

Liverpool it
forwards. To





26 Newhampton Ter
Donevbroch
& Duben



Miss M. Coulson
40 Grafton Place
Dublin
Ireland

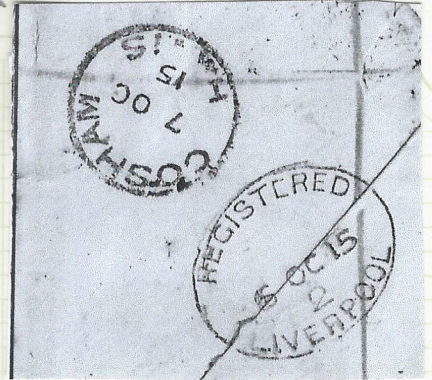
DUALA (KAMERUN) 6
7.9.15
ADRESSE TO IRELAND

5 PFENNIG GERMAN POSTAL STATIONARY
CARD PRINTED C.E.F. 1/2
SCARCE COMMERCIAL USAGE.



NO CHARGE TO BE RAISED

Duala 9



LIEUT. COLONEL W.G. CLEMENTS. R.A.M.C. (R)

MILITARY HOSPITAL, HILSEA

HANTS. *Cosham,*

ENGLAND.

REGISTERED? MAIL CONTRARY TO GENERAL ROUTINE ORDER NO 16 OF 3 OCTOBER 1914 STATING THAT A REGISTRATION SERVICE WAS NOT PROVIDED AT C.E.F. POST OFFICE -

On Active Service
NO CHARGE TO BE RAISED



*The London Glove Co
Cheapside & New Bond St
London
England*

*The London Glove Co
G.M.D. Co
B.H. Dulak*



NO CHARGE TO BE RAISED

*Miss Ella West
Hillside*

*Mauswood
Poblochaws*

Scotland.

BRITISH HOME POSTAL CACKET ON ALL THREE "NO CHARGE TO BE RAISED" ON ACTIVE SERVICE MAIL

DUALA 10.9.15
b/s TARBES
18.10.15



CEF
4^a



Monsieur Jean Vélère

26 Place Mambouyouch

Tarbes

France

H. G. G. G.

UNUSUAL FRENCH (MILITARY CACHET) AND BRITISH (C.E.F 4^a ADHESNE) FRANKING ON COVER TO FRANCE. NOT ENDORSED AS SENT FROM A FRENCH FORCE MEMBER AND THIS "FREE FRANK" ENTITLEMENT YET PASSED THROUGH THE FRENCH VAGHEMESTRE'S OFFICE WITHOUT SURCHARGE. STRANGELY AT SOME POINT A CEF 4^a OVERPRINTED STAMP WAS AFFIXED AND CANCELLED "DUALA (KOMERUN) 10.9.15" THIS SUGGESTS SENDER MAY NOT HAVE BEEN ENTITLED TO FRANKING CONCESSION OF THE FRENCH P.O. DID NOT OPEN IN DUALA UNTIL DEC. 1915. FROM THE CEF P.O. THE RATE TO FOREIGN COUNTRIES WAS 2 1/2^d FIRST 1oz + 1 1/2^d EACH EXTRA OUNCE. THIS LETTER COULD HAVE WEIGHED UP TO 2 OUNCES.

Per S.S. "



The MANAGER,

BANK OF BRITISH WE

Lome

Handwritten scribbles and fragments of text on a strip of paper.



*Edia le 15.9.05
Joueurs du
Cameroon
Moluy*

Vollbeh-Künstlerpostkarten „Kamerun“

3. Njoja in seinem Audienzhof. Unter einer runden, mit reich geschnitzten Balken umgebenen Halle sitzt Njoja. Er ist von einem Pfeife tragenden Jüngling und seinem ganzen Gefolge umgeben. Die Thronessel sind wertvolle, alte Perlarbeiten.

Had the
misfortune to
speciate my
right and but
I'm not going
to let that interfere
Jack

Alleinvertreib: Basler Missionshandlung, Duala (Kamerun).

POSTKA



To

Mrs Sellex

5 Gains Rd

Southsea

Hants

England



0/1 print in blue

Mr J. Ingham

Fairview

Hill Top Avenue

Cheddle Hulme

Cheshire

England

CEF
1/2 in blue?

23rd Sept 1915

Dear Moll

This is a place
a few miles up the
river, can get there by
train. I understand there
is no way across like this
as there is no way
mountains and forests
of rain.

Yours ever
Jim

Postkarte — Carte Postale
Union postale universelle
Weltpostverein



MRS M. J. BAPTIE "6"

117 FOREST ROAD

SELKIRK

SCOTLAND

£10

On Active Service
No stamps

Thos. White & Co Ltd



Military Outposts

Aldershot

England

Alpheus Capt
OCD Col. R.

FRONT ONLY

PUTATIVE REGISTERED N° 11.



DUALA KAMERUN 2

7.10.15



Messrs Whitefield King & Coy

Spencer

England

M. McGillvray Director
Posts and Telegraphs

↑
b/s

M. MCGILVRAY
DIRECTOR POST DUALA

'2' 2.10.15



On Aerial Service. No Stamps obtainable

Charlot Lt
S.C.P.

Mrs E. Faruol
6, Maldon Road,
Dyker Road,
Brighton.
Sussex.



ENGLAND.

GOLD
COAST
REGT.

P.

no stamps available
 ADM

DUALA
 15.10.15.
 CAMEROUN

Humburg Papers & Co.
 Military Tailors.
 30 King Street
 Great London
 W.C.

England

(front only)

Humburg Papers & Co.

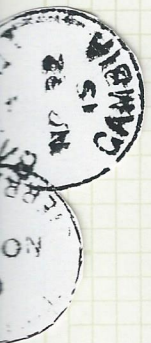
On active service

No stamps available

W.H. Dyer
 Capt.

Humburg Papers & Co.
 30 King Street
 Great London
 England. London

DUALA
 16.10.15.
 CAMEROUN



COMMERCIAL
COVER TO THE
GAMBIA AT
1st IMPERIAL
RATE

Mrs S. J. Cameron
P.O. His Excellency the Governor
Bathurst
The Gambia
West Africa

On Africa Service
in Stamp
Abuak. Aug 2

% Mrs MacLaggart:
Rosemount
Campbelltown.



172nd Shand. Argyshire.



XI. B

Kingstley. Lower Bourne.

England.

Tarnham
Surrey

Deutsche Kolonial-Eisenbahn-Bau- und Betriebsgesellschaft zu Berlin.
Betriebsleitung der Kamerun-Eisenbahn zu Bonaberi.

An active service
no Stamp Available

EB



Winnifred
Lieut R E

The Sunday Chronicle
Withy Grove
Manchester
England

MEDICAL

On ac Service

V. C. Green Esq
2/ West India Regt
~~Donnot Aured~~



~~Sierra Leone~~
N. A

Duala
Kameruns

KCo Lieut
2/10.19

In action - letter no stamp available



W

Alfred Wilson Esqr

18-19 Gracechurch Street

franked by.

London E.C.

*W. J. Wain Capt
OC naupe*

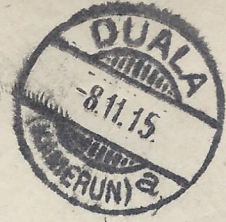
Gelände der Mittellandbahn u. Basler Missionsstation Bonaku in Duala, Kamerun



'b'

On Active Service

No
Stamps
Available
F. H. H. H. H.
R. H. H. H.



Mrs Frank Hinsley
2 Kildare Gardens
Bayswater
London

England

On Active Se.

Messrs Gore & Co
Army Agents,
Charing Cross
London SW.



From J. B. Braidlaw
Ass. Director P&T

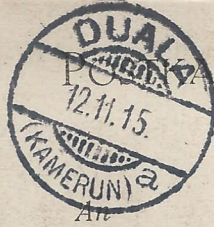
↑ FROM J. B. BRAIDLAW
ASS. DIRECTOR P&T

Nov 11th 1915
 Vollbehr = Künstlerpostkarten „Kamerun“
 7. Militärstation Bamenda, im Vordergrund ein Dorf der Haussa. Die Haussa sind die stets herumziehenden, schlauen, schwarzen Kaufleute Kameruns. Sie bauen sich nur einfache Hütten. Sie sind im Anfertigen von farbigen Leder und Perlarbeiten sehr geschickt.

Very good for Xmas from
 Harry

This place is in our position
 we hope to spend Xmas at
 Yaunde the present German
 Stronghold and going up
 country in the 17th again
 it may be without a chance
 of posting again for some
 time. Kindest wishes
 to you all.

Nov 11th 1915
 Alleinvertrieb: Basler Missionshandlung, Duala (Kamerun).



On airmail service via
 AIR MAIL
 J.H. Bush
 I.N.R.
 Cameron Exped. Force
 Waprica

Lt Col T. W. Davies

49 Ashchurch Grove

Ransomcourt Park

London

Hyland W

SENDER J.H. BUSH
 1st BATT NIGERIA REGT.

NOT TRACED ON
 NOMINAL ROLL OF
 CEF IN MID. 1915.
 PROBABLY ARRIVED
 LATER THAT YEAR
 WHEN REINFORCEMENTS
 ARRIVED FROM
 NIGERIA FOR FRESH
 OFFENSIVE TOWARDS
 JAUNDE, WHICH
 WAS CAPTURED
 CHRISTMAS 1915.

8.5
 5.11



Mr James Kols
 Duala
 Cameroun

C.E.F
STERLING
SURCHARGES
ON
GERMAN
KAMERUN
STAMPS

FULL SET
 OF 13 VALUES
 (CAT. £3,500)
 B1-1313



Office of the Civil Commissioner,

Mr Castro, J.C.
 Lome
 Togo

1/ 9 PFENNIG
 VALUES ON
 COVER ADDRESSED
 LOCALITY TO
 DUALA

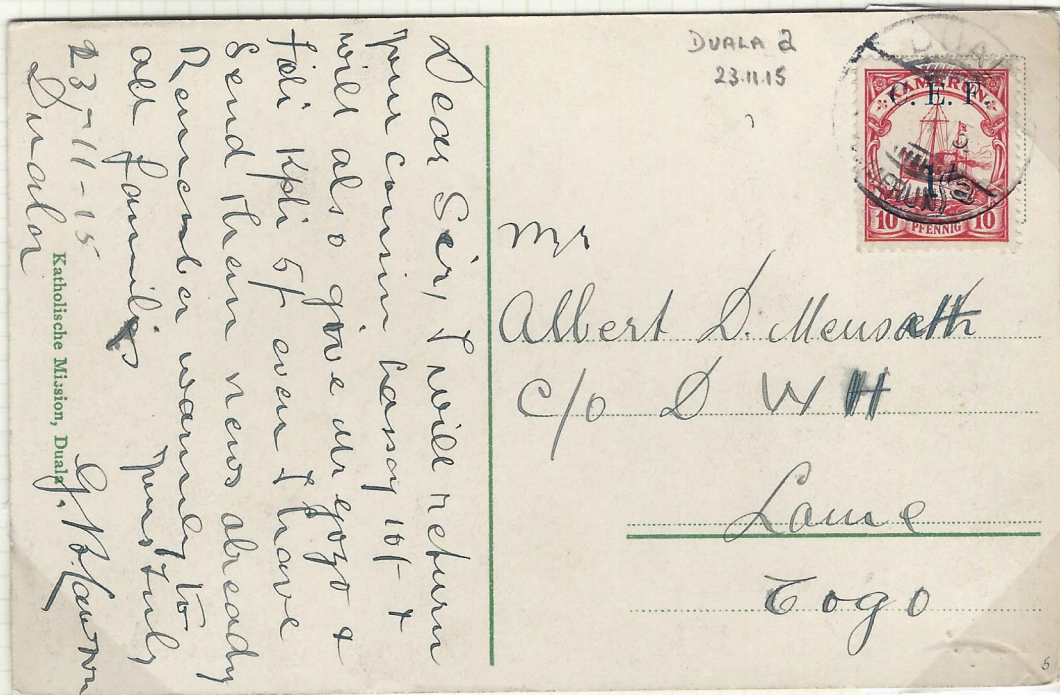
2/ 4 MARK
 VALUES ON
 COVER POSTALLY
 ADDRESSED
 TO LOME,
 TOGOLAND
 (BACKSTAMPED)

BOTH
 DATE STAMPED
 16-11-15
 DUALA '6'

CAMEROONS EXPEDITIONARY FORCE 1914-1916



C. W. Kellawell,
 Green House,
 Fartown,
 Huddersfield,
 England.



DUALA 2
 23-11-15

Mr
 Albert D. Meusath
 c/o D W H
 Lane
 Togo

Dear Sir, I will return
 your coming vacancy 10/- &
 will also give an extra 2
 fols 10/11 5/- even I have
 send them news already
 Remember warmly to
 all families yours truly
 23-11-15
 J. B. Kellawell
 Catholic Mission, Duala

↑
 FATHER OF
 ONE OF MY
 CLERKS IN VICTORIA

~~London Only~~
Number

In Actus Since



Mrs W.F. Dowling

Magrenna

Belle Vue Rd

Shrewsbury
Eng

F. Stinsley
Kent R.E.
O.C. Works.



COVER
CONTAINING C

AMON PLUS ALBUM LEAF 8337
STANLEY GIBBONS LTD, LONDON AND RINGWOOD
MADE AND PRINTED IN GREAT BRITAIN



WEST AFRICAN EXPEDITIONARY FORCE..XMAS GREETINGS
 £

Xmas 1915 hand drawn fragile card with many faults showing emblem & crest of Royal Engineers with the flags of France & Britain From the Royal Engineers with the West African Expeditionary Force, Duala Xmas 1915 & with on rev C.E.F. Ovpts on adhs from ½d on 3pf to 3d on 30pf unfortunately uncanceled.

WITH
 COVER
 TO
 ADDRESS
 OPPOSITE

FRAGILE

Active Service



Mr & Mrs Oreston

42 King Edward Road

Coventry

England

J.H.
Lieut R.E.
D.C. Works.

Active Service



Mrs W Howling

Wagnuma

Bella Vue R^o

Streatney

J. Hensley
Lieut R.E.
O.C. Works.

V.C.G. dk.
2/W.I.R.



Mrs. J. T. Green.

6. Eaton Road.

Birkenhead.

England.

no active service. No stamps available.

Cameroon



Henry Weaver Esq.,

Station Superintendent,

Paddington.

London. 6.

Postage.
o.c. N. R.
Cameroon RE.

NOT EFFECTED NO 19/5

Registered



Noble Burrows Esq.
Oxford
England

MB

Mc. S. 14. 1915

LONDON SW
10.15 AM
4 JAN 16

On Action
Series
LONDON
10.15 AM
4 JAN 16

XII

Miss P. M. Heriot-Hill,
40 Mrs. Carter,
York Lodge,
Walton-on-Thames.

England



8.12.15



M. to Smith Esq
by the Cantonment

Lome Togo

arrival Togo, on reverse

very rare thus

Printed logo

Lome



On active service
DEUTSCH-WESTAFRIKANISCHE BANK
DUALA

London



W. S. Cowper Esq.
Sulphidge & Co L^{td}
London
England.

Stamps unobtainable

Mr. S. G. Ives

Messrs W. D. Woodin & Co

17 Brunswick St,

Liverpool



RARE CAMEROON MAIL TAKEN ON BOARD AT FORCADOES OR LAGOS BY RMS 'AFRAN' WHICH WAS CAPTURED BY GERMAN RAIDER 'MOENE' ON 15.1.16 AND TAKEN AS A WAR PRIZE TO HAMPTON ROADS, VIRGINIA, USA. MAIL AND PASSENGERS RELEASED. THIS COVER BEARS LONDON 19.2.16 TRANSIT STAMP.

On adress hier
Postkarte — Carte postale
Weltpostverein — Union postale universelle
20 Stamps available



Ann
Exp. W. S. Sand
all imp. v.
Boen

J. W. Litcher

To Northern Column

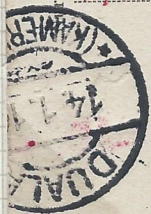
Dschang

DUALA

W. A. M.

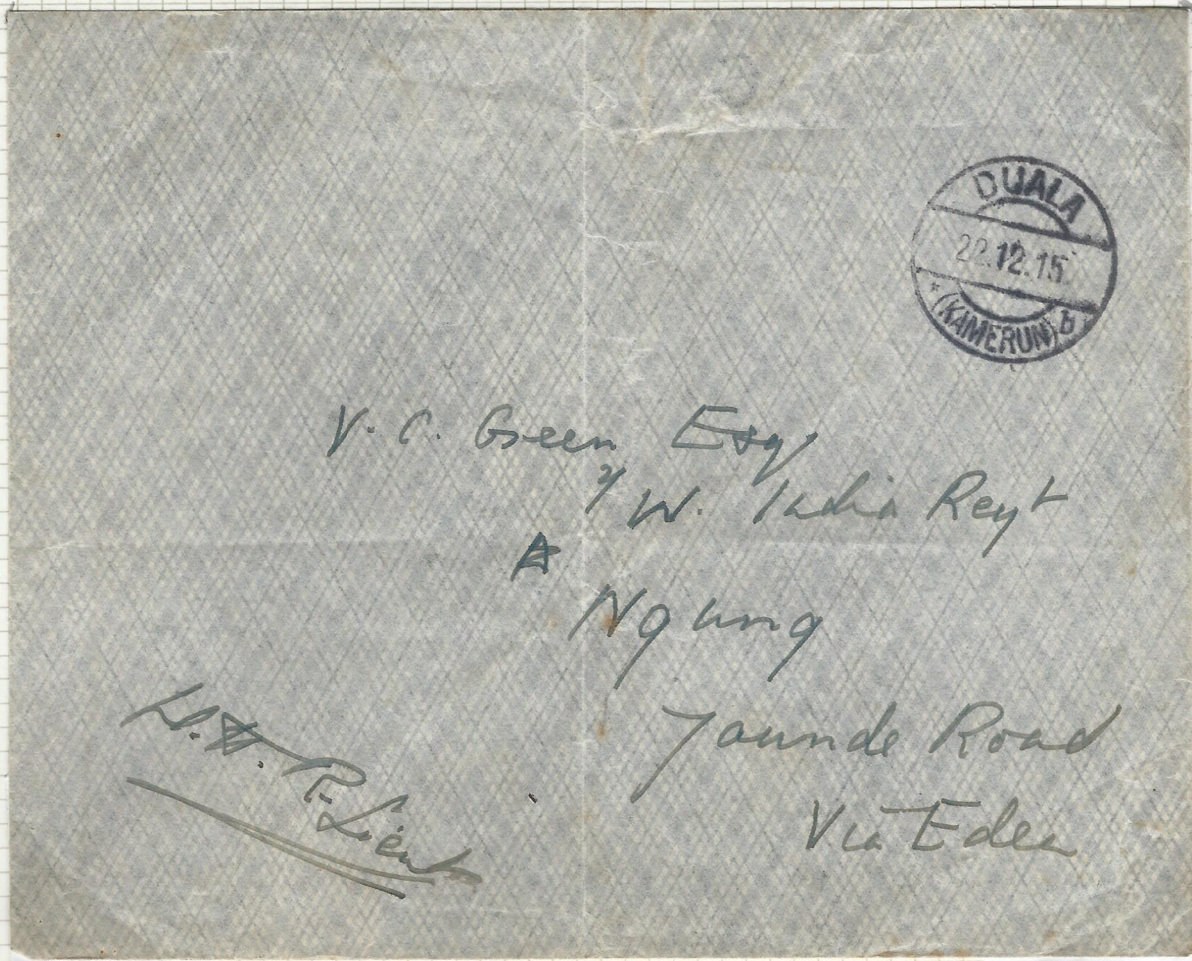
J. M. S.

Duala

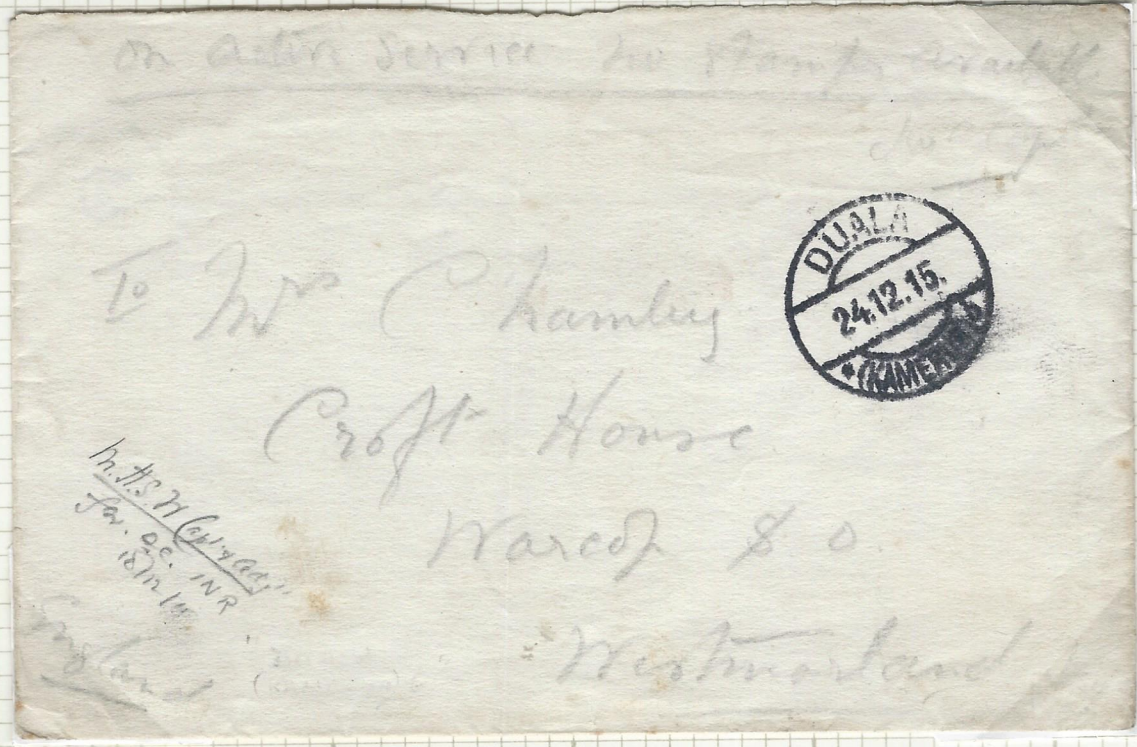


UNSTAMPED (NONE MILITARY) BUT SURCHARGE WAS CANCELLED.

SEARCH INTER OCCUPIED CAMEROON MAIL UNUSUAL - REDIRECTION RESULTED IN IMPRESSIONS OF BOTH 'DUALA a' AND 'DUALA b' HANDSTAMP



SCARCE
INTER
CAMEROON
WARTIME
MAIL OF
OCCUPIED
ZONE



Ms. stamp
W.M. 1851

On Active Service

Cameron

Messrs Barclay & Co
Bankers

Benet St =

Cambridge

England



W.M. 1851
C.M.

(30.12.15)

In active service Cameroon



USE OF
BRITISH STAMP

Mrs E. Lintott
Bell House
Marsham
Via Ashford
Kent England

Postkarte — Carte Postale
Union postale universelle
Weltpostverein



Mr
Albert J. Mansel
passed by Censor
at
Lome (Togo)
Lome
Togoland

NON-MILITARY

TOGO
CENSOR -
LOME 22-1-16
B/S



Alfred Wilson

18-19 Gracechurch Street

London E.C.

Alfred Wilson



~~XIV~~



Miss P. M. Hendon Hill,



Park Road,

West Kirby

Cheshire

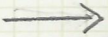
England

*Actin Service
C. to C. to C. to C.*

Capt. R. Bromhead
Garrison Office West
Killingholm
Lincs
England.



*Kings Harbour Master
DUALA*



*On Actin Service
C. to C. to C. to C.*

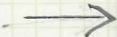
Mrs Frodsbam Lund
Pleas Isaf.
Ruthin
S. Wales.



SURCHARGE
IN BLACK.

*Kings Harbour Master
DUALA
15. Letter*

11-1-16





R

REGISTERED.

Herrn

Albert D. Mensah,



LOME.

Togoland.

NO BACKSTAMPS
PHILATELIC
COVER - NOT
MAILED. NOT
REGISTERED.



Mrs. J. T. Green.
6. Eaton Road.
Birkenhead.

England

USE OF
GERMAN
TELEGRAPHS
SEAL ON
REVERSE



Suellaaba, le 20 janvier 1916

Ma chère Henri,

Reçu le 16th carte du 1^{er} décembre et le bulletin qui l'accompagnait.

Reçu ce matin les cartes du 30 novembre et du 8 décembre. On ne comprend plus rien à la marche de nos courriers.

Climat toujours très pénible, on réussit même sans faire le moindre effort; c'est un malaise perpétuel; pas de brise, un soleil de feu, du brailard malgré cela et une humidité tiède qui pénètre partout.

Les opérations militaires avancent avec une grande rapidité. Nos colonnes se rejoignent et les indigènes lâchent les Boches qui abandonnent du matériel et paraissent tentés de chercher un refuge dans le Gambia espagnol.

Je crois que, si nous n'allons pas dans l'Est africain allemand, nous renherons en France n'êt tout terminés ici, c'est à dire vers fin mai. Je le souhaite fort car je n'en peux plus et j'aurais à faire pour regner le paludisme.

Bonne nuit.

Je t'embrasse,

R. Rossignol

ALLIED INTRIGUES! 1916.

AS THE CAMPAIGN DREW TO A CLOSE THE FRENCH POLITICIANS IN PARIS SOUGHT TO CLAIM A GREATER SHARE IN THE SPOILS OF WAR ELSEWHERE IN AFRICA EVEN THOUGH FRANCE WAS NOT PARTICIPATING IN THE FIGHTING THERE. TO THIS END THEY PROPOSED TRANSFERRING THEIR WEST AFRICAN TROOPS TO FIGHT WITH THE BRITISH IN GERMAN EAST AFRICA. THIS UNANSWERED VIEW CARD WAS WRITTEN BY A FRENCH MAN ON 20.1.16 AT THE ALLIED NAVAL BASE OF SUELLABA IN THE CAMEROONS LITERARY. IT CONTAINS A REFERENCE TO THE FOREGOING. IT NEVER MATERIALISED FOR THE BRITISH WERE EVER WARY OF FRENCH POLITICAL INTRIGUE. THEY HOWEVER CONCEDED THE LION'S SHARE OF GERMAN KAMEROON TO THE FRENCH RATHER THAN GIVE THEIR FITFUL ALLY ANY SCOPE TO CONVEY THE BRITISH ACQUISITION OF GERMAN EAST AND SOUTH WEST AFRICA.

From Lt. Rowledge, N. Douce, Cameroon

On active service

Messrs

The Wilkinson Sword Co Ltd

Pall Mall

England London W.



On active service
From August Leutique
Cameroon - Colonne



Mademoiselle Mary Helme
.....
.....

Mogaro
.....
.....

Paris
France



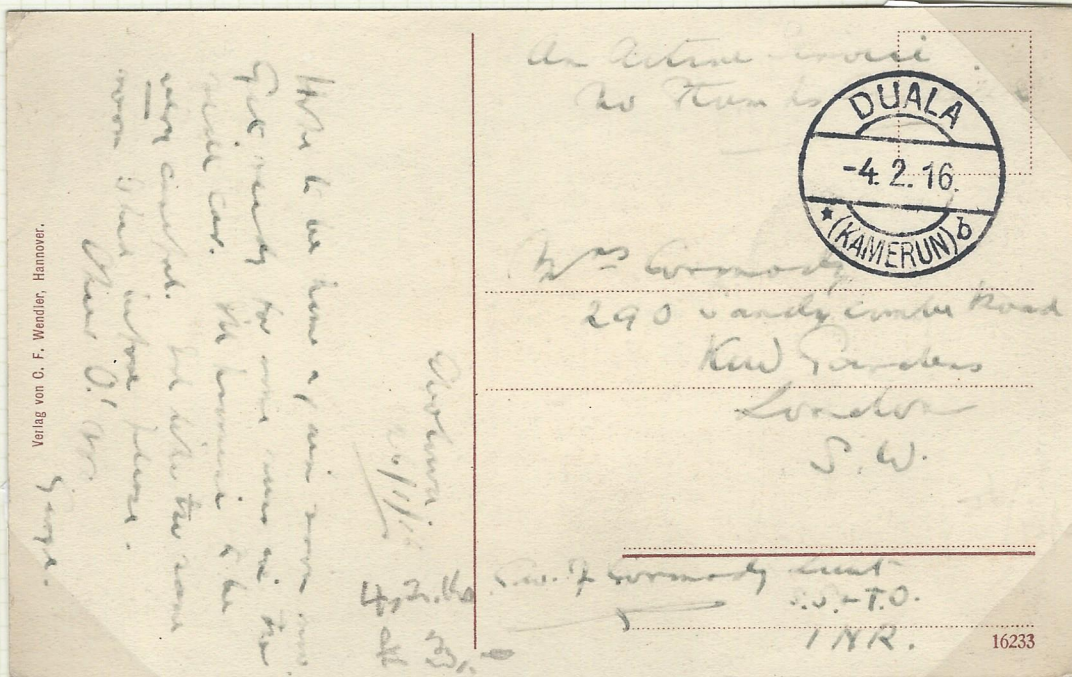
DATE-LINED YAOUNDE 19.1.16 BY A FRENCHMAN OF GENERAL AYMERICH'S FRENCH COLUMN WHICH REACHED THE TOWN SEVERAL DAYS AFTER ITS CAPTURE BY THE BRITISH COLUMN ON 1ST JAN 1916. THIS CARD WENT ALONG THE BRITISH LINES TO ENTER THE CEF POSTAL SERVICE AT DUALA. UNUSAL ROWING FOR FRENCH MAIL

NON-MILITARY
UNSTAMPED
(CENSORED)
COVERS
TAXED IN
U.S.A.



FAULTS
BUT
VERY
RARE
CENSORED
MAIL FROM
OCCUPIED
CAMERUN
TO USA.

CAMEROONS/U.S.A.: 1916 Stampless Cover (some wear and flap missing) to U.S.A. with ink notation "Kindly forward as no stamps are available", DUALA datestamp (2 February), endorsed in pencil "Passed by Censor, DWC" and "Stamps not available", with pre-cancelled U.S.A. Postage Due 10c and New York Due 10 cts binocular cancel. A most unusual cover.



↑ 1ST BATTALION NIGERIA REGT.



NIGERIAN
FRANKING

Mr. Alfred Wilson - Junr.
Book seller,
Gracechurch St.,
London.
England.

Via Duala (Cameroun) Liverpool



↑
France

Paris (per accordissement)

27 Rue des Pyramides 27

Monsieur & Madame A. Couée

WRITTEN AT YAUNDE BY FRENCHMAN OF GENERAL AMERICHÉ NORTMAN
COLUMN WHICH HAD JOINED UP WITH THE BRITISH COLUMN THERE. ONLY
SECOND EXAMPLE NOTED OF FRENCH MAIL GOING VIA BRITISH LINES TO THE
SEE POST OFFICE DUALA. NOTE DIRECTION VIA DUALA, BORDEAUX OR LIVERPOOL.
NO BACK STAMPS. THIS CONFIRMS THAT CONTRARY TO SOME COLLECTORS, FRENCH-
BOUND MAIL COULD HAVE BEEN DIRECTED VIA LIVERPOOL IN BRITISH SHIPS
IN SEPARATE BAGS

Postkarte — Carte Postale
Union postale universelle
Weltpostverein



Mr.
Albert D. Mensah

Lome (Togo)

Lome

Togoland

10

TOGO
CENSOR



On Active Service
no stamps available

Butterfields Ltd
Stechford
Birmingham
England



R.O. Robinson
13/2/16

On active Service -



Mrs Rhodes.

No 5 Flat

~~Datham Hall~~

17 Stratton Str.

~~Piccadilly~~
~~Newmarket~~
London W.

England.



F. Giles
Maj R.E.

PART
ORIGINAL
LETTER
ENCLOSED

THIS IS ONE
OF THE LAST
LETTERS
OF THE
CAMPAIGN
WRITTEN
BY NOW
MAJOR F.
GILES, R.E.
WHO ALSO
SENT THE
FIRST ONE
ON 3.10.14

(GILES'
ALPHA
AND
OMEGA)

1916 (Feb) stampless 'On active Service' from Duala to Newmarket, readdressed on arrival to London, with two strikes of DUALA despatch cds (the first dated '12.2.16' and deleted, the second dated 24.2.16), and Newmarket transit cds (18 MR) on face. Endorsed at lower left 'F. Giles/Maj R.E.', and with part original contents revealing that this cover contained two sets of the stamps ('fetching already £10 a piece in England') and stationery. Slight cover creasing (and torn flap) but rare and interesting.

can. I wonder how they managed to slip out of Hamburg without being caught in the North Sea.

I enclose two sets of stamps for the family (* also postcards). You don't see which are the collectors, so please give them to the two most ardent. The sets are fetching £10 a piece already ^{in England} so in a few years should become very valuable, for the issue was such a small one. No individual was allowed to purchase more than seven sets ~~of~~ and no one outside the Cameroon was permitted to buy.

Our show is over. The German Governor has gone into Spanish Territory and sent a telegram to Berlin to say that he has evacuated the country. It only remains for ourselves & the French to decide how the country is to be governed & this seems to be a knotty point. At any rate they are taking a long time making up their minds. Anyway I'm hoping to be home in April or May and a chance of sitting down & sleeping for a bit!

Love to all the family,
as always & sincerely Frank R. H. P.

Active Service Stamp. Unavailable

11. 15 AM

11. 15 AM

7 APR 16

3 APR 16

*Mrs S. Lindley
Lions Building
Huddersfield
England*



Edmund G. G. G.

On active service

M. C. Can. Jones. R.

S. Ch. Hanson Esq.



P. W. D.

Lagos.

Nigeria.



achor - vice
no stamps available

Miss Hurston

11 Barbican Square

London, N.W.

England

Postmaster
at London

V.C. 9. 14.
W.I.R.

On return form



Mrs. J. T. Green

6. Caton Road

Birkenhead

England

'b' 3.3.16

GERMAN
TELEGRAPHS
SEAL ON
REVERSE

On active service no stamps p.g.

Miss K. Barrard
Campsie



Keston
Kent
England

NIGERIAN STAMPS
CANCELLED DUALA
KAMERUN 'b'
6-3-16. DOUBTFUL
WHETHER CEF STAMPS
WERE THEN UNAVAILABLE
BUT NONE REQUIRED
FOR "ON ACTIVE
SERVICE" MAIL IN
ANY EVENT.



PIECE OF CLOTH REINFORCED ENVELOPE MISSING ADDRESS, RETAINING
NIGERIAN STAMPS TO VALUE 11^d ($\frac{1}{2}$ ^d x 4, 1^d x 5 and 2^d x 2)
CANCELLED DUALA (KAMERUN) 'b' 22-3-16, NEAR TO CLOSURE OF
BRITISH-RUN C.E.F. POST OFFICE ON 31.3.16. LIKELY COMMERCIAL SENDING.
STOCKS OF CEF STAMPS BEING LOW WERE SUPPLEMENTED BY NIGERIAN
G.V. STAMPS FROM LAGOS. NO CONFIRMATION FOUND IN GENERAL ROUTINE
ORDERS OR BASE ORDERS OF THE CEF ADMINISTRATION. RARE USAGE THUS.

(Art. 483 de l'Instruction générale.)

(Art. 485 de l'Instruction)

CONTROLÉ
par
L'AUTORITÉ MILITAIRE

25-2
1916



École militaire St Etienne
St Etienne (Seine-et-Loire) Le Comptable
Monsieur le Receveur Britannique (Anglais)
des Postes

**PARTI SANS
LAISSER D'ADRESSE**

**RETOUR
L'ENVOYEUR**

PAS POUR LE SECTEUR POSTAL N°112

à Duala (Cameroun)

Corps Expéditionnaire du Cameroun
franco-anglais

1916 COVER FROM FRANCE ADDRESSED TO THE BRITISH RECEIVER OF POSTS, DUALA, ANGLO-FRENCH EXPEDITIONARY FORCE, WAS UNCLAIMED (BRITISH ADMINISTRATED POST OFFICE HAD CLOSED ON 31.3.16) AND RETURNED BY ITS FRENCH SUCCESSOR TO FRANCE. INTERESTING ARRAY OF VARIOUS CENSOR AND INSTRUCTIONAL HANDSTAMPS. RARE THUS.

A French Finale to the C.E.F. Post Office at Duala

Bob Maddocks



"Gone Away without Leaving Address" and "Return to Sender" was how the French postal authorities in French Occupied Cameroun marked this cover which, addressed to the British Postmaster, C.E.F. Post Office Duala, they had received after the closure of that office on 31 March 1916 and after the departure of the British personnel of the Royal Engineers who had run it for the Allied Expeditionary Force.

On 1 April 1916 the captured German colony of Kamerun was, by an earlier agreement between the allies, divided for administration purposes into separate British and French spheres. Duala, the base of Allied Command, was transferred to French control and the troops of the British contingent of the now disbanded Expeditionary Force were withdrawn to England and her West African colonies - the British Sphere of Kamerun was to be administered as part of Nigeria.

This cover had originated from a French serviceman, A. Bayle, 17 Company, Secteur 112, presumably in France given the French postage stamp. It was most probably posted in February or March 1916 - certainly before the division of occupied Kamerun - although the impression of the postal date stamp TRESOR ET POSTES / 112 clearly shows the day (25) and the year (16) it is obscure as to the month, which could be an inverted 2. No other date stamp or marking is on the envelope.

The addressee's name and address have been crossed through and the sender's address on the reverse has been underlined in the same red crayon. This was no doubt done by the French postal authorities in Duala where two small boxed cachets reading PARTI SANS / LAISSER d'ADRESSE and RETOUR / L'ENVOYEUR were applied in mauve ink. These instructional markings are very early examples after the French take over at Duala.

The third and largest cachet **CONTROLÉ / par / L'AUTORITÉ MILITAIRE** had been struck in violet ink to tie the Postes et Telegraphes resealing tape to the envelope which had been opened at some stage for examination. It is difficult to determine whether this was carried out on the outward or return journey of the cover and at what point on the route.

The cover, having been returned to France, did not find the sender at his given original address of Secteur 112. Accordingly the number was blacked out in pencil and the single line cachet **PAS POUR LE SECTEUR POSTAL N° 112** applied in black ink on the front of the cover. Above this a forwarding address was added in manuscript with an indelible pencil "Ecole Militaire St Cyr, St Cyr (Seine et Oise) 2° Compagnie". The words St Cyr had in turn been heavily underlined in blue crayon presumably by the French metropolitan postal authorities to highlight the ultimate destination of the returned cover in the final course of delivery to the original sender.



"Gone Away without Leaving Address" and "Return to Sender" was how the French postal authorities in French Occupied Kamerun marked the cover which, addressed to the British Postmaster, C.E.L. Post Office Duala, they had received after the closure of that office on 31 March 1916 and after the departure of the British personnel of the Royal Engineers who had run it for the Allied Expeditionary Force.

On 1 April 1916 the captured German colony of Kamerun was by an earlier agreement between the Allies divided for administrative purposes into separate British and French spheres. Duala, the port of Allied Kamerun, was transferred to French control and the troops of the British contingent of the now disbanded Expeditionary Force were withdrawn to England and her West African colonies - the British sphere of Kamerun was to be administered as part of Nigeria.



DUALA
12-7-16
NO INDEX
LETTER

Mr. H. Brooks,
 ↳ Willow Bank ↳
 Churchend. DUNMOW. Essex.
 England

H 756.13

DUALA, KAMERUN DATE STAMP (WITHOUT INDEX LETTER) 12.7.16
 USED TO CANCEL TO ORDER OBSOLETE CEF (PRINTED) KAMERUN
 STAMPS 1/2 ON 5 PF AND 1 ON 10 PF BOTH IN STRIPS OF 3. LATTER (PRINTED)
 IN BLACK. NO EVIDENCE OF COVER HAVING BEEN MAILED AND NO
 BACKSTAMPS. THOUGH CROSSED WITH BLUE LINES NO REGISTRATION
 LABEL / NUMBER.
 FROM 1-4-16 FRENCH TOOK OVER FORMER CEF POST OFFICE USING THEIR
 OWN POSTAGE STAMPS WITH FRANC VALUES. INITIALLY ALSO USED FORMER
 GERMAN DUALA, KAMERUN DATE STAMP (WITHOUT INDEX LETTER)
 PHILATELIC COVER - VALUE LIES WITH THE 10 STAMPS BEING
 SURCHARGED IN BLACK INK. (CAT. 355A.)

Colonie franc. Anglalt du Cameroun

Deutsche Reichspost

Postkarte



An

Monsieur le Capitaine Abadie

Etat. Major

Dakar

Die angegebene Karte ist für die Antwort bestimmt.

in

Wohnung

(Straße und Hausnummer)

GERMAN KAMERUN POSTAL STATIONARY REPLY CARD 1902 ISSUE 5 PF + 5 PF WITHOUT W/MK (OUTWARD PART ONLY). USED BY A MEMBER OF FRENCH CONTINGENT OF C.E.F. BASED AT EDEA. (DATELINE) 18.1.14 (IN ERROR FOR 18.1.15) ADDRESSED TO DAKAR, SENEGAL (ARRIVED ? FEB. 15). MILITARY FREE FRANK. TECHNICALLY GERMAN ISSUE STILL VALID UNTIL GERMAN SURRENDER OF WHOLE TERRITORY IN FEB. 1916. CARD SEIZED IN KAMERUN HAS NOT BEEN SURCHARGED CEF AND NEW VALUES. VERY RARE USAGE OF UNSURCHARGED KAMERUN POSTAL STATIONARY BY OCCUPYING FRENCH EXPEDITIONARY FORCE MEMBER

LARGE CIRCULAR MILITARY CACHET WITHOUT DATE "TRESOR ET POSTE AUX ARMEES" FIRST USED DUALA 5.10.14, AT EDEA 25.12.14

Franchise postale... Colonne expéditionnaire Cameroun

Madame Ernest Thomazeau

152, rue du Général Renault, 152,

Cours

France

Indre-et-Loire



↑ IN GLUE

Deutsche Kolonial-Eisenbahn-Bau- und Betriebsgesellschaft zu Berlin.
Betriebsleitung der Kameruner Mittellandbahn zu Duala.

FM



← IN BLACK
b/s
ROSNY 21-2-15

Madame Gravet
37 rue du Pré Gentil
Rosny s Bois
près Paris

Colonne Expéditionnaire du Cameroun

Mrs Sarah Bonaventure



Village Azuwa
Iglass
Libreville Gaboon

b/s
LIBREVILLE 9.8.15

↑
IN VIOLET

NOTE
ROUTING
OF MAIL
VIA LAGOS
LIVERPOOL
TO FRANCE

Via Lagos - Liverpool
Cours exp.^{te} franç.^{se} du Cameroun
W. African expeditionary force



~~M. Robert~~

Madame Faurey
122 Avenue de Neuilly 122

b/s
NEUILLY
20.3.15

Neuilly / Seine
près Paris

Colonne expéditionnaire du Cameroun
Franchise postale

FROM EJEAN

France

b/s 22.7.15

Je soussigné l'agent comptable
de la Lt. Cyrien



7 bis rue du Sud

Seines et Oise Versailles

Vollbehrr-Künstlerpostkarten „Kamerun“

2. Njoja im Kreise seiner Frauen. Der Bamumhauptling hat mehrere hundert Frauen; jede hat Anspruch auf eigene Hauslichkeit. Im Gegensatz zu den Graslandweibern gehen diese vollig gekleidet und tragen hohe Haarfrisuren in alt-assyrischem Stil.

Duala 26.10.15

En souvenir de
ma villigiation
sur les bords de
la Dibamba.

Cameroun
Bardes affectueux
Moluy

Alleinvertrieb: Basler Missionshandlung, Duala (Kamerun).

POSTKARTE

An

Madam P. Woltere

Bonnay Charente

Charente Inférieure

France

Colonne Craped du Cameroun - Lettre Franchise postale

Monsieur Eugene Dele

76^e Regiment d'Inf^{rie} 5^e Comp^{ie}

Secteur 59

Par le bureau Militaire de Paris

du Cameroun
 Service aux armées
 FROM DUALA
 Madame Edouard Ferreira
 28 Rue Duluc
 Bordeaux
 Gironde



Correspondance prisonniers de guerre
 Depot de Duala
 Alapitane C.
 Rev. E. Sender
 Successe
 Cpt. Soppo Buea
 via Viktorin
 Baptisten Mission



VERY RARE KAMERUN PRISONER OF WAR MAIL FROM DUALA POW CAMP TO A BAPTISH MISSIONARY AT BUEA, KAMERUN. ENDORSED TOP RIGHT BY THE FRENCH CAPTAIN COMMANDING THE CAMP. STAMPLESS WITH MILITARY CACHET IN BLACK "TRESOR ET POSTE AUX ARMÉES". NO BACK STAMPS. THE PRIESTS OF THE GERMAN BAPTISH MISSION WERE UNDER DEEP SUSPICION BY THE ALLIES THROUGHOUT THE WAR AND MANY WERE DEPORTED OR INTERNED. SEVERAL WERE AMERICAN CITIZENS.

No stamps available. franchise postale
Corps expédition du Cameroun

Monsieur le Commandant Jung
Etat-Major
~~de troupes Coloniales~~
10^e Division Coloniale

~~au Camp de Frejus~~

Secteur Postal 167

~~Var~~ - France



le colon
Monsieur

No 8/5

1915c STAMPLESS FREE FRANK COVER FROM A MEMBER OF THE FRENCH CONTINGENT ADDRESSED TO COMMANDANT JUNG AT FREJUS CAMP IN FRANCE READDRESSED TO 10th COLONIAL DIVISION, POSTAL SECTOR 167. LARGE CACHET 'TRESOR ET POSTE AUX ARMEES' IN VIOLET

Monsieur Kassouma Koulibali

quartier Kaloko



ADDRESSEE IN IVORY COAST

Cameroun 1916. RR

b/s JUALA
(KAMERUN) b
23.4.16
AND
?
COTE D'IVOIRE
4.5.16

VERY RARE
MAIL FROM LITERATE
AFRICAN MEMBER
OF FRENCH WEST
AFRICAN TROOP
SERVING IN THE
KAMERUN. MOST
AFRICAN FOOT
SOLDIERS WERE
ILLITERATE.

Colonne Expéditionnaire du Cameroun.
Franchise Postale.

M.B.

Madame Branche,
route de la mer.



Argeles s/mes

(Pyrénées - Or^{le})

France

DUALA 22.277

L'ASSISTANCE AUX DÉPÔTS D'ÉCLOPÉS, 72, Avenue des Champs-Élysées - PARIS



CARTE POSTALE

22.277

Avec les amitiés de
soutien et espoir
voir bientôt la fin

Dokud
Boutant
Julien
Koccol

M. Juncos

Fernand Sautot

Régie des P.T.T.

Jaoudé

DUALA
22.277

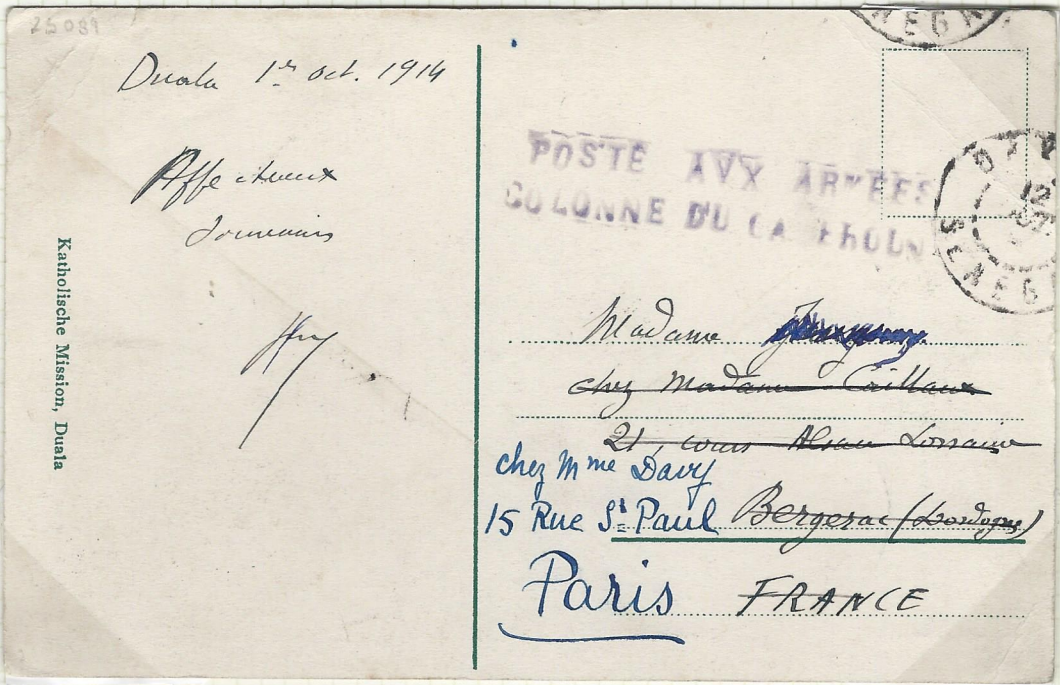
938616



REGISTERED COVER DUALA TO FRANCE FRANKED 35^c OCCUPATION FRANCAIS CANCELLED BY GERMAN KAMERUN DUALA DATE STAMP WITHOUT INDEX LETTER 13.12.16. ALSO IMPRESSION OF FIRST FRENCH DUALA, CAMEROUN POSTAL DATE STAMP 13-12-16 WITH THE YEAR INVERTED. ALSO LARGE CIRCULAR CACHET TRESOR ET POSTE AUX ARMEES IN VIOLET. UNUSAL MIXED FRENCH MILITARY AND CIVIL HAND STAMPS.

BACKSTAMPED SHIP'S OCTAGONAL DATE STAMP "MATAFI A BORDEAUX LLN°7. 24.12.16 AND MONTDIDIER, SOMME 11.1.17

AVX FOR AUX



"POSTE AVX ARMEES COLONNE DU CAMEROUN"

TWO LINE FRENCH MILITARY CACHET STRUCK IN VIOLET (NOTE "V" FOR "U" IN AUX) APPLIED AT DUALA 1.10.14 ON VIEW CARD TO FRANCE SENT VIA DAKAR, SENEGAL.

SCARCE.

THE FRENCH CONTINGENT OF THE C.E.F. WAS COMMANDED BY COLONEL MAYER FROM DAKAR, FRENCH WEST AFRICA. INITIALLY AT DUALA HE MADE HIS BASE AT EDEA AFTER ITS CAPTURE ON 26.10.14 FOR THE REST OF THE CAMPAIGN.

colonne expéditionnaire du Cameroun) colonne libérée
Bataillon Maitre

Colonne du Cameroun
Franchise Militaire

Madame V^e Delepuere

A Locon

Tas de Calais



France

NB
SUPPLIED
IN JANUARY
1915

←
←
EARLY
USE OF
THIS DATE
STAMP AND
BEFORE
FORMAL
OPENING
OF FRENCH
PO IN DUARA
(NOV. 1915)

11
JANV
19
(1915)

COLONNE DU CAMEROUN
FRANCHISE MILITAIRE

TWO LINE FRENCH MILITARY FREE FRANK CACHET STRUCK
IN BLUE-GREEN ON COVER TO FRANCE. ALSO CIRCULAR ARMY
DATE STAMP "TRESOR ET POSTES AUX ARMEES CAMEROUN
11 JANV 19". THE DATE IS SET IN THREE LINES INSTEAD OF THE ORIGINAL
FOUR LINES TO INCLUDE FULL YEAR - "3/JANV/19/15" AS ON NEXT PAGE.
THE DATE IS ALSO INVERTED.

VERY SCARCE

* TRESOR et POSTE aux ARMEES *
Colonne du Cameroun
Franchise Militaire
Monsieur Charpentier

43 Rue Ernest Renan

France

Paris

* TRESOR ET POSTE AUX ARMEES *
COLONNE DU CAMEROUN
FRANCHISE MILITAIRE
1915 THREE LINE FRENCH MILITARY
FREE FRANK CACHET IN VIOLET
ON COVER TO FRANCE - NO RIS.
"M" IN "MILITAIRE" IS INVERTED
IN ALL IMPRESSIONS

SCARCE

Franchise
postale

Colonne française du Cameroun



Madame H. [REDACTED]

89, boulevard de Strasbourg, 89

Compagnie Transatlantique

Le Havre

FRANCE

b/s LE HAVRE
2.2.15

← DATE INITIALLY
SET
IN FOUR
LINES AND
INVERTED.
BY 11.1.15
THIS WAS
REDUCED
TO 3 LINES
OMITTING '15'.
(SEE COVER
OF THAT DATE)

FRENCH CONTINGENT, BASED AT EDEA, INTRODUCED THIS CIRCULAR POSTAL
DATE STAMP IN JAN. 1915 MONTHS BEFORE IT OPENED AN OFFICIAL
POST OFFICE ON 10.11.15. THIS READS "TRÉSOR ET POSTES AUX ARMÉES / CAMEROUN"
STAMPED IN BLUE-GREEN. THE DATE IS INVERTED AND SET IN FOUR LINES "3 / JANV /
19 / 15". THIS IS THE ONLY EXAMPLE SO FAR RECORDED WITH THIS SETTING.
PLEASE REFER TO PREVIOUS SHOWN COVER POSTMARKED "11 / JANV / 19" WHICH
LACKS THE YEAR '15' IN A THREE LINE SETTING. SUBSEQUENTLY, THE CENTURY
'19' WAS DROPPED TO SHOW ONLY THE YEAR. BETWEEN MID MARCH AND END
OF OCTOBER 1915 USE OF THIS DATE STAMP WAS SEEMINGLY SUSPENDED AS
ITS USE WAS LIKELY UNOFFICIAL / IRREGULAR UNTIL THE OPENING OF
THE FRENCH P.O. WAS FORMALISED IN NOVEMBER THAT YEAR WITH A U.P.N.
LISTING. USED AT EDEA.

←
VERY SCARCE

Eden, 11/3/15

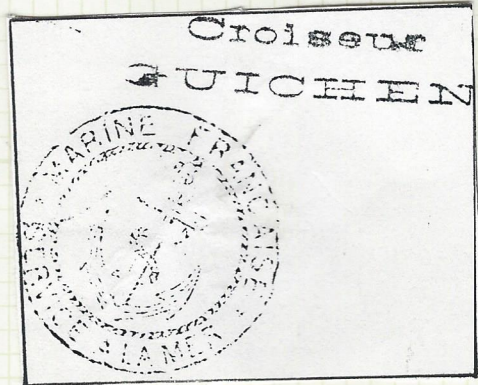
Postkarte



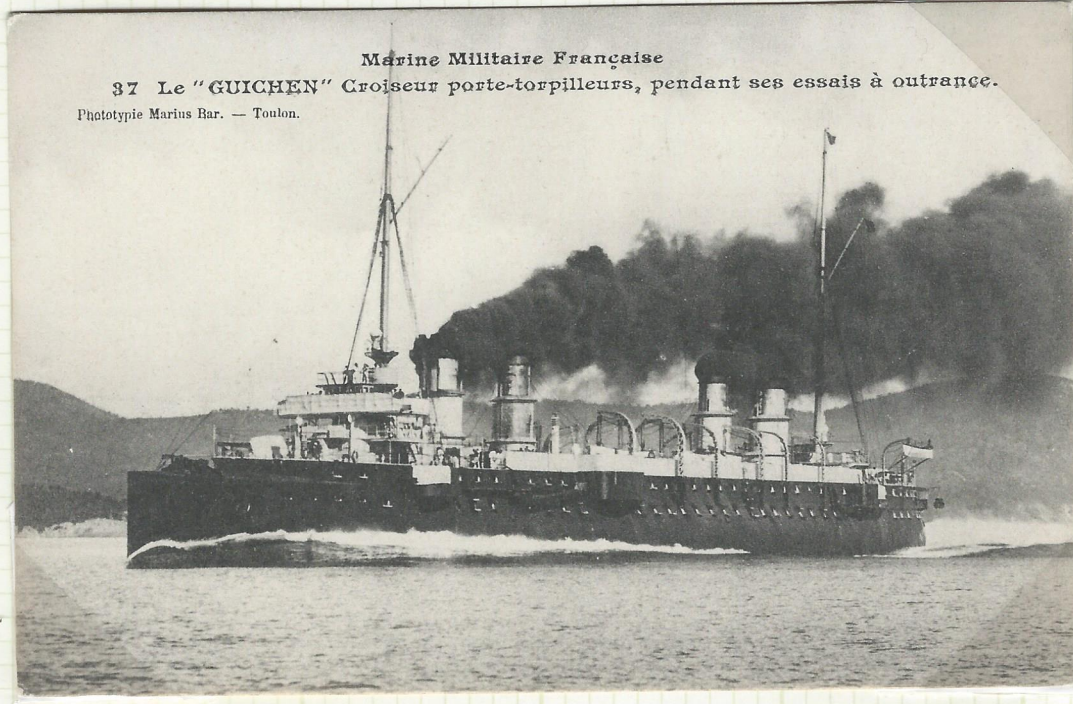
CHANGED
SETTING
TO DATE
12-3
15
(ON TWO LINES)

Le Commandant Brisson
Guichen

France Post



DATELINED EDEN 11.3.15, THIS IS ANOTHER RARE EXAMPLE OF A CAPTURED GERMAN KAMERUN POSTAL STATIONERY'S 'PE' (CARD) (WATERMARKED) USED WITHOUT A C.E.P. OVERPRINT TO FRANCE BY THE OCCUPYING FRENCH. TECHNICALLY AS KAMERUN WAS NOT YET UNDER COMPLETE ALLIED CONTROL GERMAN PRE-POSTAL STATIONERY WAS STILL VALID FOR POSTAL USE WITHOUT SURCHARGE AND ACCEPTED AS SUCH BY THE FRENCH, WHO HAD NO OFFICIAL PO OR STAMPS UNTIL 10.11.15.



Marine Militaire Française
37 Le "GUICHEN" Croiseur porte-torpilleurs, pendant ses essais à outrance.
Phototypie Marius Bar. — Toulon.

Franchise postale / Colonne expéditionnaire au Cameroun



12-3
15

Monsieur Montagne

109, avenue de la Franchise, 109
Cours

France

Indre-et-Loire

~~VB~~
NOT IN FORMAL
USE BETWEEN
THESE DATES

Franchise postale
Corps expéditionnaire au Cameroun



25-10
15

Monsieur Guertant
170 Rue Lauréol
Orléans
Loiret
France

SUGGESTS SUSPENDED USE OF
THIS FRENCH CAMEROON POST OFFICE STAMP
BETWEEN MARCH AND OCTOBER 1915
PENDING FORMAL OPENING OF FRENCH PO
ON 10-11-15

Colonne expéditionnaire française - Cameroun

Madame Jean Marchand
Docteur Jean Marchand
27 rue de l'Hotel de Ville
Lyon - France



FRENCH
OPENED
THEIR POST
OFFICE
10.11.15
AND ALSO
ISSUED
THEIR OWN
POSTAGE
STAMPS

F.M.
Le même a été remis de 27
rue de l'Hotel de Ville
de Lyon - France
Marchand

N.B.
EARLIEST
RECORDED
COVER
PROBABLY
15.11.15 -
SEE THEM
WITH CACHET
"AFRIQUE"

Affranchi par l'expéditeur

307
R



Recommande Monsieur Alfred Lehmann

G. S. C. O. A.
19 rue de Valenciennes 19
Paris.

"PHILATELIC COVER 25.11.15 TO FRANCE BY REGISTERED MAIL BEARING 4 CEF 0/PRINTED VALUES AND TWO OF FRENCH ISSUE 'CORPS EXPEDITIONNAIRE FRANCO-ANGLAIS CAMEROUN'. FRANCES 35^F COVERED COST OF POST AND REGISTRATION. ONLY THE FRENCH PROVIDED A REGISTRATION OF MAIL SERVICE AT DUALA.

272

g

600
43



b/s
12-12-15

Monsieur Marcel Philippson
fondateur de journaux à la Terrasse
Gabon Libreville

REGISTERED 10^c+25^c

~~ON HIS MAJESTY'S SERVICE~~

288

Comme
de my
Worce

H. Botane

London

Glasgow
Dublin

Irlande



b/s REGISTERED
LONDON 27.12.15
FRANK 80c.

TRESOR ET POSTES
AUX ARMEES
CAMEROUN
25-11-15

13-12-15

REGISTRATION
SERVICE WAS
NOT AVAILABLE
AT C.E.F. POST OFFICE





15-12-15



14-12-15

FRENCH 35^c POSTAGE + REGISTRATIONS . C.E.F. 1^{er} PHILATELIC ADDITIONS

RÉPUBLIQUE FRANÇAISE
 POSTES ET TÉLÉGRAPHES
 RÉCÉPISSÉ
 No DE SÉRIE [033,432] No DU MANDAT [152]

Montant du mandat...	f.	c.
100	00	00
Droit.....	0	20
TOTAL.....	100	20

L'expéditeur peut indiquer ci-dessous le nom et l'adresse du destinataire:
 M. Koko Koko
 Zoumadi

25-12-15

XMAS DAY -
 FRENCH
 POSTAL MANDAT
 RECEIPT
 25-12-15

J.M.

Madame Gravet
 4 rue Chambortin
 Paris 12



25-12-15



10.1.16
 BROAD 6 in 16
 ASTERISK ABOVE DATE
 OR OVERINKE/SNUDD?



1.2.16
 BROAD 6 in 16
 VESTIGE OF
 ASTERISK/SNUDD
 ABOVE DATE

370



Monsieur Victor Guyon
6 Rue Nollet

Paris
XVIII

BOTH WITH
LARGE "6"
IN "16"

-SEE NARROW
"6" IN STAMPS
ON POSTCARDS
OVERLAP

492



Monsieur C. Woller

Porto de Delicias



(Dahary)

Porto-Vovo

"6"



NB NARROW 'b' IN '16' (SEE PREVIOUS PAGE) NOTED ONLY IN FEB/MARCH 1916
PHILATELIC TO ORDER BELIEVED BACKDATED.

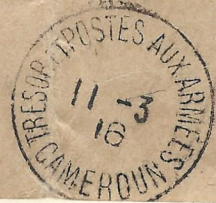
REGISTERED



451



Monsieur Totebou,
- Bingerville.



Cote d'Ivoire.

BROAD 6" x 16"



REGISTERED
"C.E.F. STAMPS ARE
PHILATELIC ONLY
35^c FRENCH
ADHESIVE
COVERS POSTAGE
AND REGISTRATION
10^c + 25^c

Recommandée,
affranchie par le système.



Monsieur de Beauport.

Guinée Française

Consigne



BROAD 6" x 16"

490



Monsieur G. Wolber

Portes des Télégraphes



Bahony

Porto-Novo

R

REGISTERED

246



Monsieur Philippe

Officier Intendance



REGISTERED

CARTE POSTALE



CORRESPONDANCE

ADRESSE

Imp. R. PRUVOST 159, r. Montmartre - Paris

Leclercq

M. Sgt. André Leclercq

9th Regt M.S.A.

high 101

Douala

5-5-17

VERY LATE
USAGE OF
THIS DATE
STAMP.

AS FROM
1-4-16
FRENCH HAD
TAKEN OVER
FOR THEIR
OWN USE

THE CLOSED
C.I.F. P.O.

AND USED
THE FORMER
GERMAN

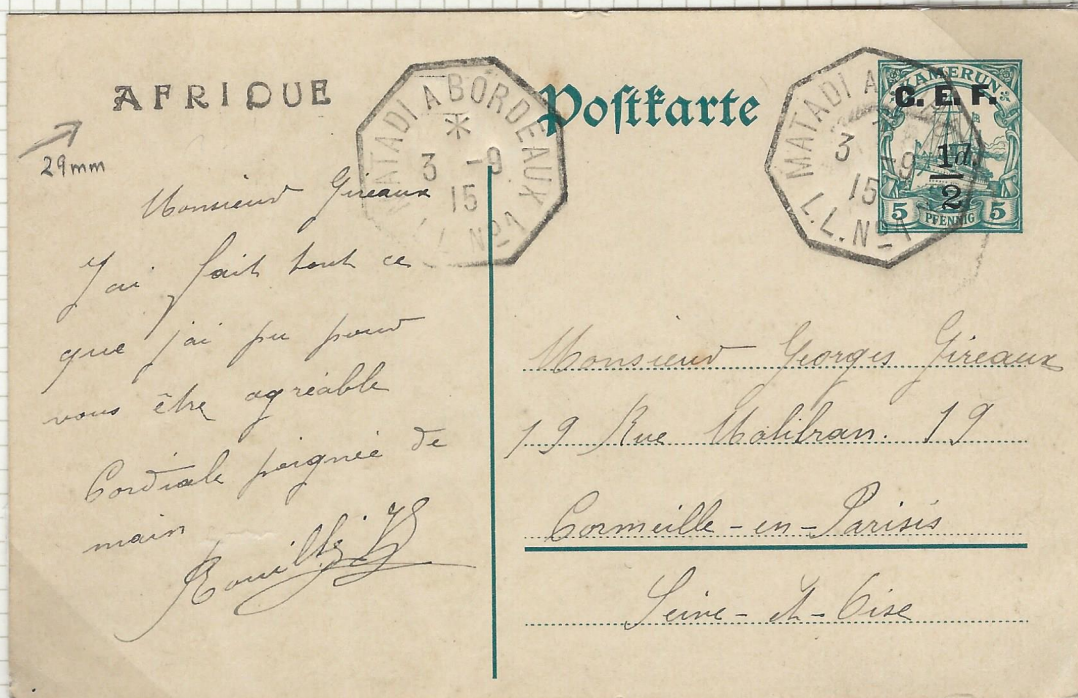
DUAL POSTAL

DATE STAMP

IN PLACE OF

THIS MILITARY

ONE



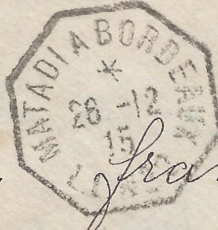
VERY RARE POSTALLY USED KAMERUN SPA GREEN WATERMARKED POSTAL STATIONARY CARD
 OVERPRINTED "CEF 1/2" ADDRESSED TO FRANCE - CANCELLED WITH FRENCH MARITIME
 OCTAGONAL DATE STAMP "MATADI A BORDEAUX LL N°1 3-9-15 OF SS 'AFRIQUE'. PLUS AT
 TOP LEFT STRAIGHT LINE SHIP'S HANDSTAMP "AFRIQUE" (29mm) A RARER AND SLIMMER
 VARIANT OF THAT NORMALLY USED (SEE BELOW)



STAMPLESS COVER
 TO FRANCE P/MARKED
 FRENCH MILITARY
 DATE STAMP "TRESOR
 ET POSTES AUX
 ARMÉES CAMEROUN
 15-11-15 WITH
 STRAIGHT LINE "DUALA
 IN MARVE ALONGSIDE.
 (FRENCH PO OPENED
 DUALA 10-11-15)
 ADDED IN BLACK
 OCTAGONAL DATE
 STAMP "MATADI A
 BORDEAUX LL N°1
 18-11-15" OF THE
 CARRYING VESSEL
 SS 'AFRIQUE' WITH
 THAT SHIP'S STRAIGHT
 LINE HANDSTAMP
 "AFRIQUE" IN VIOLET
 TOP LEFT. AT 50mm
 IN SIZE THIS IS
 MORE COMMONLY
 SEEN USED ON MAIL
 THAN THE SLIMMER
 CACHET ABOVE.

NB EARLIEST DATE KNOWN 15.11.15
 AFTER OPENING FRENCH PO 10.11.15.

France



S^r St^e Paul, ^{← LL N°2} franciscain,
au Raincy, n°1 Boulevard du Nord.
Seine-et-Oise,
Colon expéditionnaire du Cameroun

MATADI A BORDEAUX
LL N°2
28-12-15

Poste navale

M^{lle} Lucienne Faïron

7 rue Merlan



←
POSTE
NAVALE

MARINE
FRANCAIS
CACHET

France



Noisy-le-sec
(Seine)

Ligne N°2
4.6.16

M. C. FAIRON, QUARTER MASTER
SENDER - MECHANIC ON BOARD
FRENCH CRUISER "FRIANT" AT DUALA.

MATADI A BORDEAUX
LL N°2
4.6.16

F. M. Corps Expé du Cameroun

FRANCHISE
MILITAIRE

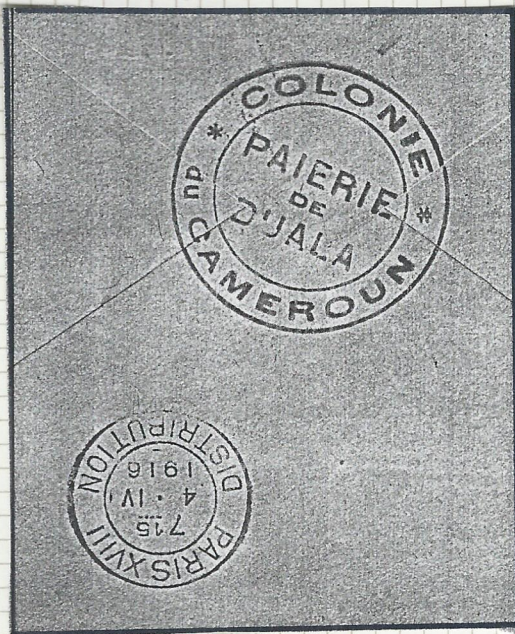
Monsieur

M. Lion Beauhais
70 Rue Marseillet

Paris

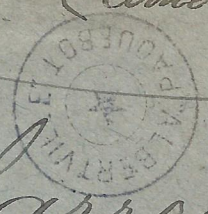


MATADI A BORDEAUX
LLN°2 14-6-16



PAYMASTER
DUALA
COLONY OF
CAMEROUN.

M. Paul Marrel adjutant Futuro aux Colonies
 Duala Cameroun
 Fournier Maitre
 Madame Marrel
 5 rue de l'Embarcad.
 Cherbourg
 Maitre



CAMEROON
 MILITARY
 STAMPLESS COVER
 INSCRIBED BY HAND
 FRANCAISE
 MILITAIRE: SHIPS
 HANDSTAMP
 ALBERTVILLE/PACQUEBOT
 ADDRESSED TO
 CHERBOURG
 8 STAMPS
 DAKAR, SENEGAL
 15 MARS 16 AND
 CHERBOURG (DATE
 UNCLEAR)

M. Paul Marrel adjutant Futuro aux Colonies
 Duala Cameroun
 Monsieur et Madame Malet
 198 rue Champs-Élysées
 Paris
 18^e août



SIMILAR MAILING
 TO ABOVE BUT
 ADDRESSED TO PARIS.
 BACK STAMPED DAKAR
 SENEGAL 15 MARS 16
 3 BELGIAN POSTAGE
 STAMPS AFFIXED
 AND CANCELLED BY
 SHIP'S HANDSTAMP.
 NO EXPLANATION
 WHY THIS FRANKED
 AND OVER THE
 INSCRIPTION
 "FRANCAISE MILITAIRE"
 WHEN OTHER COVER
 WAS NOT SIMILARLY
 TREATED BY SHIP'S
 PURSER.
 PROBABLY THE FREE
 FRANK CONCESSION
 TO ANGLO-FRENCH
 FORCES IN CAMEROON
 DID NOT EXTEND TO
 THEIR MAIL POSTED
 ON BOARD BELGIAN
 VESSELS SERVING
 CAMEROON.
 UNUSUAL

TWO 1916 "FRANCAISE MILITAIRE" INSCRIBED COVERS BOTH FROM SAME FRENCH MILITARY
 ADJUTANT DUALA TO FRANCE POSTED ON BOARD BELGIAN PACQUEBOT "ALBERTVILLE"
 WITH SHIP'S CIRCULAR CACNET "ALBERTVILLE/PACQUEBOT".